



Health
Innovation
Manchester



Utilisation Management Unit

HEALTH INEQUALITIES DATA REPORT

THE GAP MIND THE GAP MIND THE GAP MIND THE GAP MIND THE GAP MIND THE GAP MIND THE GAP MIND THE GAP MIND THE GAP

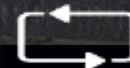
Swan Network Wigan Primary Care Network
November 2021



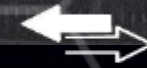
DISCOVER



IMPROVE



EVALUATE



CHANGE



Document Title	Health Inequalities Data Report: Swan Network Wigan Primary Care Network	
Report requested by	Janet Castrogiovanni Managing Director Greater Manchester Primary Care Board (PCB)	
Author	Sarah Fretwell Analytical Manager The Utilisation Management Unit Part of Health Innovation Manchester Suite C, Third Floor Citylabs, Nelson Street Manchester, M13 9NQ Email: sarah.fretwell@nhs.net	
Data Analysis	Sarah Fretwell Analytical Manager The Utilisation Management Unit Part of Health Innovation Manchester	Paul White Senior Primary Care Analyst Greater Manchester Health and Social Care Partnership
Declaration of Interests	None <i>The UM Unit is part of Health Innovation Manchester which is hosted by Manchester University NHS Foundation Trust (MFT). Health Innovation Manchester accesses the human resources and finance functions within MFT but has its own corporate governance structures that report directly to the Health Innovation Manchester Board of Directors. This hosting arrangement enables the UM Unit to retain its independence and impartiality.</i>	
Internal Review by	Emily Croasdale Information Analyst The Utilisation Management Unit Part of Health Innovation Manchester	



Contents

01

Introduction

02

Key Findings

03

PCN Overview

04

Population
Demographics

05

Life Expectancy

06

Disease Prevalence

07

Disease Prevention

08

Wider Determinants of
Health

09

GP Practice Activity

10

Unplanned Hospital
Activity

11

Summary



01

Introduction





Project Brief



The Greater Manchester (GM) Primary Care Provider Board (PCB) have responsibility for the GM Primary Care Networks (PCN) Development Programme. One of the key work streams is the sourcing, collection, presentation and reporting of meaningful data for PCNs.

In March 2021 the Utilisation Management Unit (UM) produced a 'Health Inequalities Data Report' for each of the Tameside and Glossop (T&G) PCNs. The reports provided an overview of multiple health inequality indicators and associated benchmarking, drawn from a range of existing data sources.

The PCB has commissioned UM to replicate (where possible) the work done for T&G and to produce reports for the remaining 62 PCNs across GM.



02



Key Findings



Key Findings

Data had to be sought and collated from several different sources; not all were available on a GP practice or PCN footprint and/ or were current.

Significant analytical input has been required to present available data in a meaningful way.

Health outcome data by PCN, such as, cancer survival rates, mental health outcomes and mortality from cardiovascular and respiratory disease have not been locatable.

Whilst rich information likely exists at individual GP Practice level, PCN aggregated and linked datasets are not accessible for secondary use.

Interrogation and segmentation of PCN populations, for example, by patient demographics is not possible from data currently available for secondary use.

Actionable intelligence regarding PCN level health inequalities is limited in the absence of access to linked practice and patient level aggregated data.



03



PCN Overview



Swan Network Wigan PCN

Collaborative of 8 GP Practices, located in the Lowton and Golborne and South Wigan and Ashton North community neighbourhoods;

GP Practice Code	GP Practice	Electoral Ward	Community Neighbourhood
P92034	Bryn Cross Surgery	Bryn	Lowton and Golborne
P92647	Hawkley Brook Medical Practice	Worsley Mesnes	South Wigan and Ashton North
P92642	Marus Bridge Practice	Worsley Mesnes	South Wigan and Ashton North
P92001	Medicentre	Bryn	Lowton and Golborne
P92038	Saxena L	Winstanley	South Wigan and Ashton North
P92653	Shakespeare Surgery	Worsley Mesnes	South Wigan and Ashton North
P92024	The Chandler Surgery	Worsley Mesnes	South Wigan and Ashton North
P92005	Zaman	Worsley Mesnes	South Wigan and Ashton North

In order to establish the nature and level of health and socio-economic inequalities across Swan Network Wigan PCN, data have been sought at GP Practice and PCN levels where available.

Where this has not been possible this will be highlighted within the report.

For example, some data items were only available by Wigan resident population (community neighbourhood) rather than by registered PCN population (health neighbourhood).

Benchmarking at Wigan Borough CCG, GM and national levels have been presented where data are available.

Note: PCN membership taken from ePCN file published by NHS Digital

Data Source: GMHSCP



04

Population Demographics





Swan Network Wigan PCN Population



Utilisation Management Unit



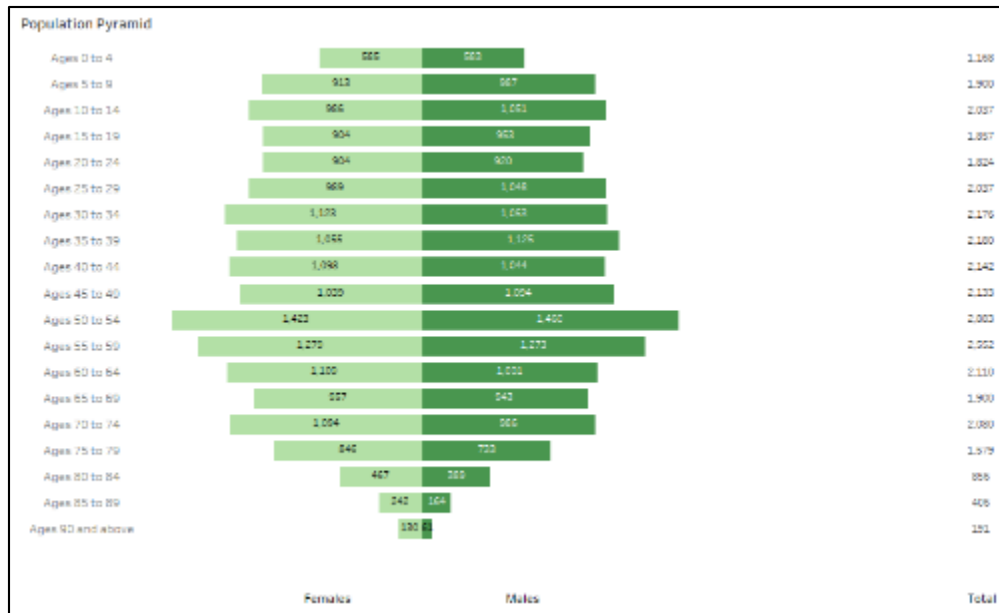
Current Registered Population = 34,011

Male: 50%; Female: 50%

Start well (0-18yrs): 19%

Live well (19-67yrs): 63%

Age well (67+yrs): 17%



Predicted CCG Population Growth Over the Next 10 Years

Wigan Borough CCG	Population Estimate 2021	Population Estimate 2031	% Change
Age Group			
0-19	75100	72453	↓3.52% (n=2647)
20-39	79978	78456	↓1.90% (n=1522)
40-59	90817	87329	↓3.84% (n=3488)
60-79	69261	78961	↑14.01% (n=9700)
80+	14858	21384	↑43.93% (n=6527)
Total *	330014	338585	↑2.60% (n=8570)

Data Source: ONS

* Figures may not sum due to rounding

Data Source: GM PCN Dashboard, November 2021

Predicted population growth across the CCG is in the 60-79 and 80 plus year groups. The impact of the current Coronavirus pandemic on this predictive analysis is not known.



Vulnerable and At-Risk Groups

Ethnic Minorities

Current data have been sought but not found.

In 2011, for the wards corresponding to Swan Network Wigan PCN, 1.7% of the resident population was from an ethnic minority.

Data Source:
2011 Census Data on Nomis,
Office for National Statistics

LGBTQ+

Data have been sought but not found for Wigan residents.

Data Source:
Subnational Sexual Identity, Office for National Statistics

Unpaid Carers

Current data have been sought but not found.

In 2011, the number of people providing unpaid care in wards corresponding to Swan Network Wigan PCN was 4157.

This number equates to 11.9% of the population.

Data Source:
2011 Census Data on Nomis,
Office for National Statistics

People whose 1st language is not English

Current data have been sought but not found.

0.29% (n=101) of households in the wards corresponding to Swan Network Wigan PCN have no residents with English as a first language.

Data Source:
2011 Census Data on Nomis,
Office for National Statistics

Military Veterans

Current data have been sought but not found.

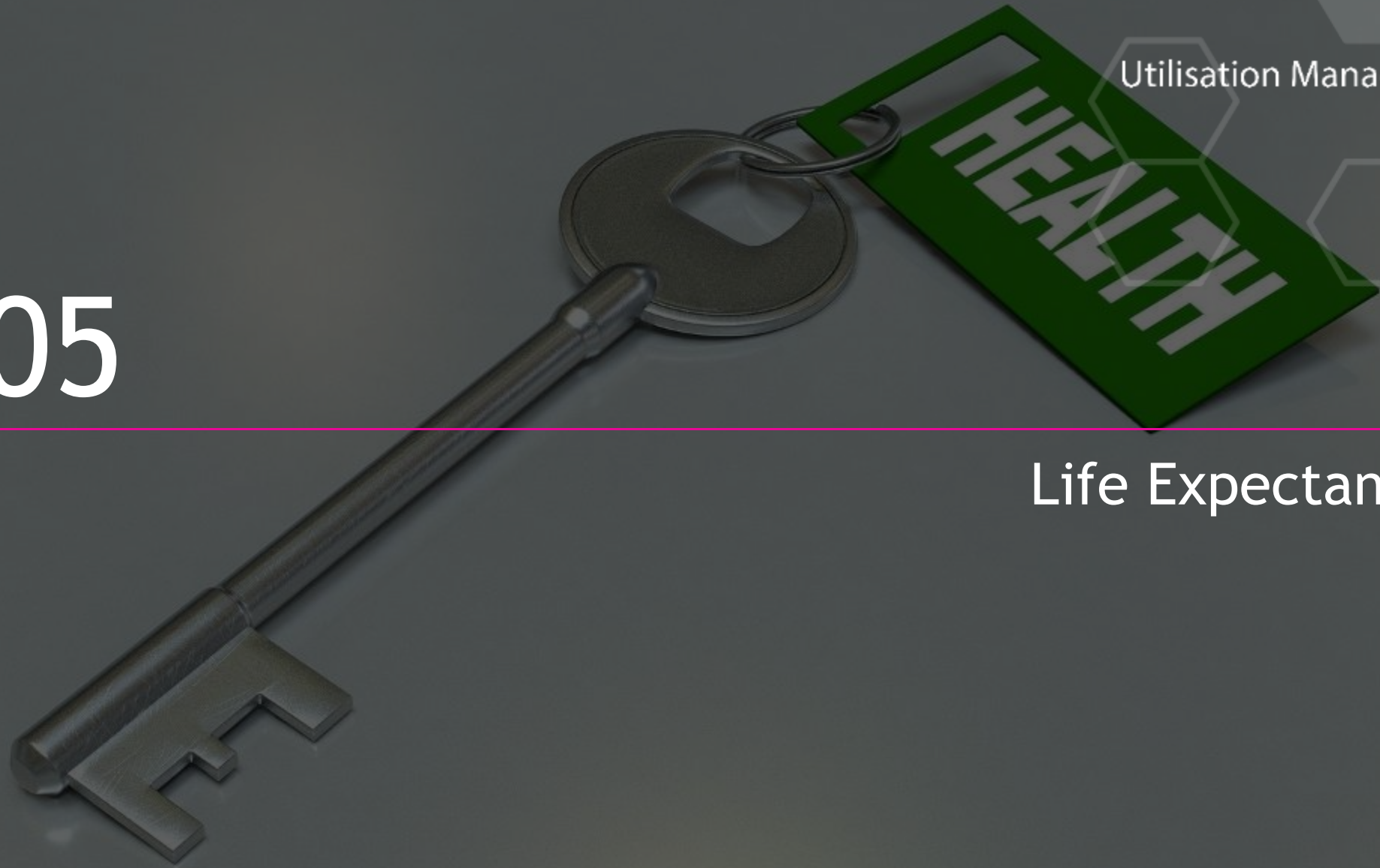
In 2017 it was estimated that 4% of the population of Greater Manchester were military veterans.

Data Source:
2017 Annual Population Survey: UK Armed Forces Veterans residing in Great Britain



05

Life Expectancy





Wigan Life Expectancy (Resident Population)

Male Life Expectancy

Wigan: 77.9 years

North West: 78.3 years

England: 79.6 years



Female Life Expectancy

Wigan : 81.2 years

North West: 81.9 years

England: 83.2 years



Male Healthy Life Expectancy

Wigan : 61.1 years

North West: 61.6 years

England: 63.4 years



Female Healthy Life Expectancy

Wigan : 61.7 years

North West: 62.5 years

England: 63.9 years



Male life expectancy from birth in Wigan is 1.7 years lower than the national average.

For women the gap is slightly larger at 2 years below the national average.

Healthy life expectancy is an estimate of lifetime spent in 'very good' or 'good' health based on how individuals perceive their health (ONS).

Figures for Wigan are below the national average by 2.3 years for men and by 2.2 years for women.

Data Source: Office for National Statistics (ONS)



Life Expectancy: Early Years

Premature Births (less than 37 weeks gestation)

Rate per 1,000 births.

	Wigan	North West	England
2010-12	84.0	77.9	75.7
2011-13	85.9	79.6	76.7
2012-14	87.4	81.4	77.6
2013-15	90.3	82.7	78.4
2014-16	88.7	84.7	79.5
2015-17	90.7	86.0	80.6
2016-18	89.0	86.3	81.2

Child Mortality (1-17 years)

Directly standardised rate of death due to all causes per 100,000 resident population, aged 1-17 years.

	Wigan	North West	England
2010-12	10.3	14.2	12.5
2011-13	9.8	13.5	11.9
2012-14	11.6	13.1	12.0
2013-15	12.7	14.0	11.9
2014-16	16.0	14.3	11.6
2015-17	18.5	14.1	11.2
2016-18	17.5	13.3	11.0
2017-19	15.2	12.6	10.8



06

Disease Prevalence





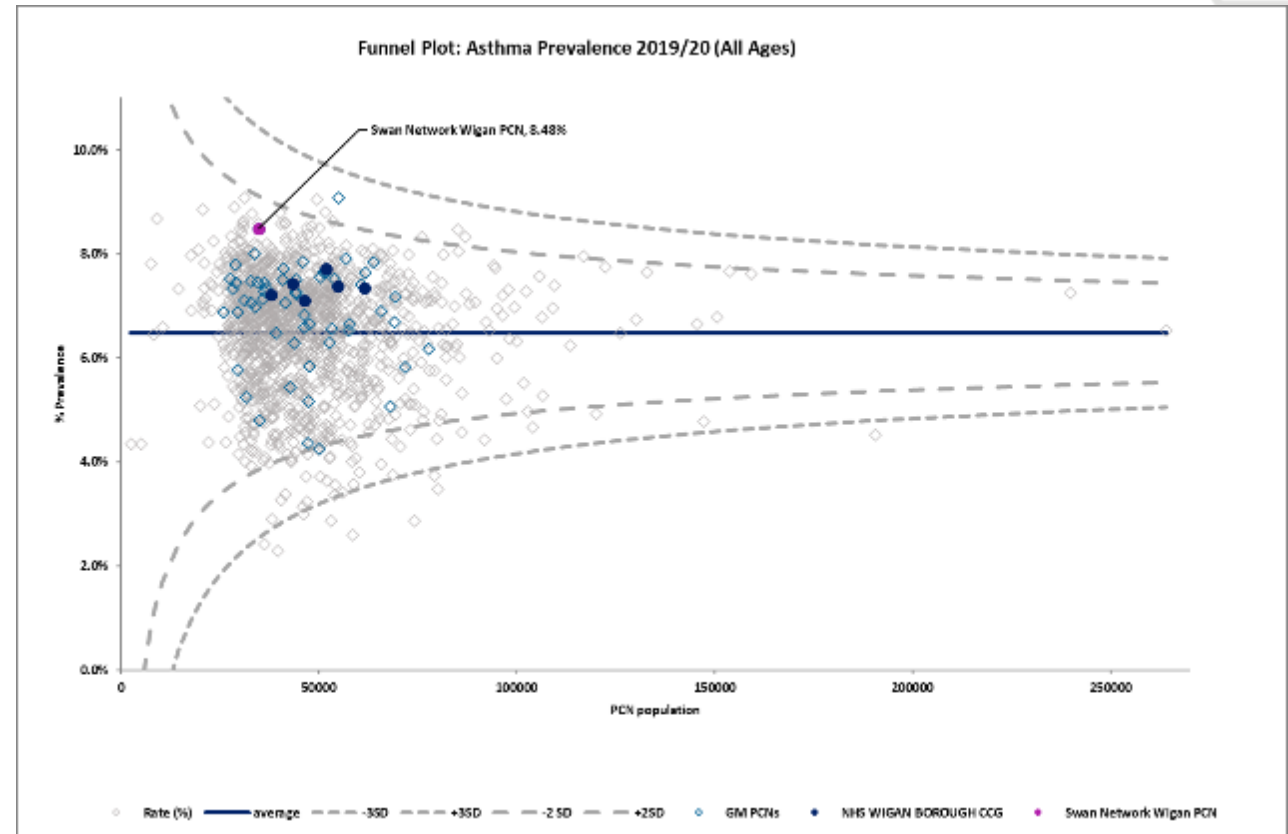
Asthma

Data Source: Quality Outcomes Framework, 2019/20

Swan Network Wigan PCN Asthma	Practice Prevalence
Bryn Cross Surgery	8.97%
Hawkley Brook Medical Practice	7.61%
Marus Bridge Practice	10.32%
Medicentre	9.30%
Saxena L	6.31%
Shakespeare Surgery	7.53%
The Chandler Surgery	7.91%
Zaman	8.06%
PCN Average	8.48%

GM Average	England Average
6.95%	6.48%

2019/20 data show that 76.31% were in receipt of an asthma review in the preceding 12 months. Wigan Central PCN had the highest achievement across Wigan Borough at 80.45%



As is the case for all Wigan Borough PCNs, Swan Network Wigan PCN's asthma prevalence is higher than the national average.



Cancer

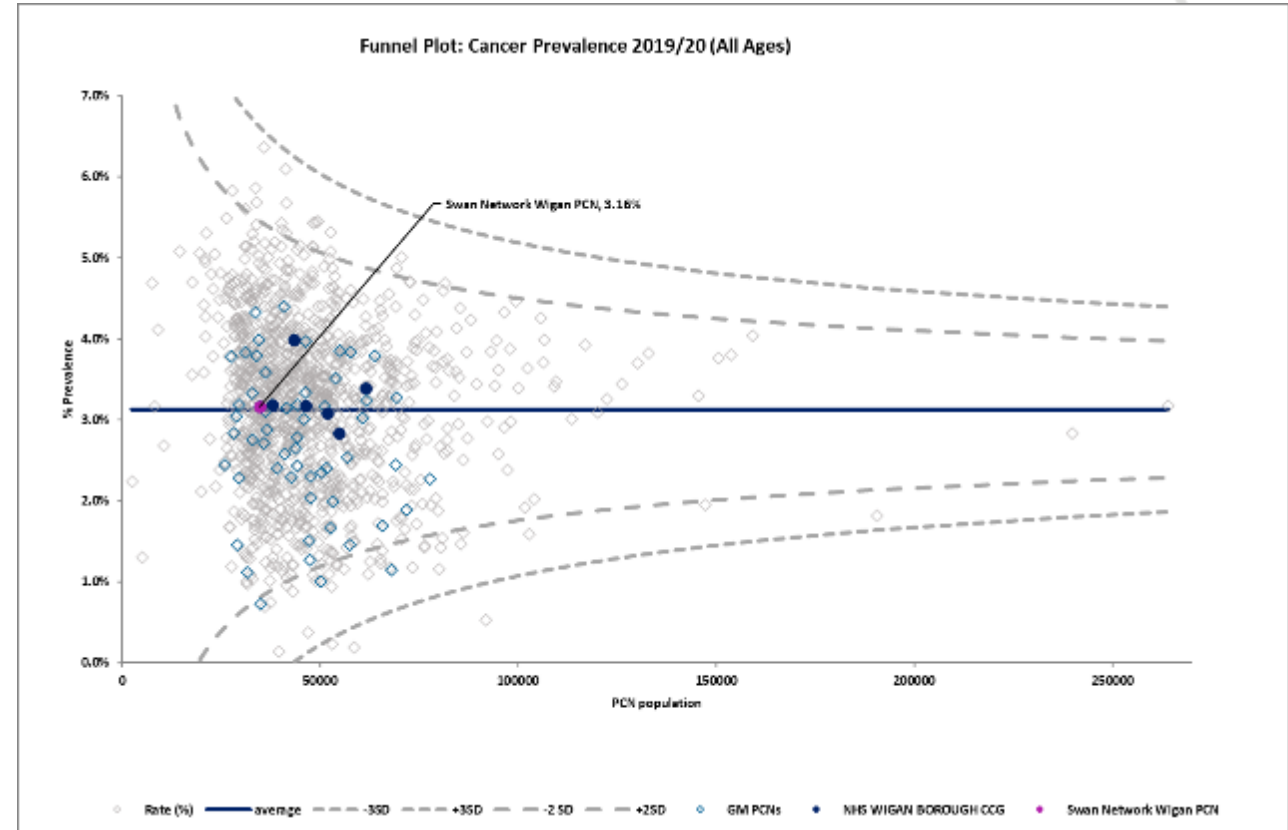
Data Source: Quality Outcomes Framework, 2019/20

Swan Network Wigan PCN Cancer	Practice Prevalence
Bryn Cross Surgery	2.85%
Hawkley Brook Medical Practice	4.53%
Marus Bridge Practice	3.17%
Medicentre	3.91%
Saxena L	2.65%
Shakespeare Surgery	2.36%
The Chandler Surgery	2.36%
Zaman	3.45%
PCN Average	3.16%

GM Average	England Average
2.76%	3.13%

Swan Network Wigan PCN's cancer prevalence is comparable to the national average.

2019/20 data show that 93.16% of those diagnosed with cancer in the preceding 15 months, were in receipt of a review within 6 months of the date of diagnosis. Liga Wigan PCN had the highest achievement across Wigan Borough at 96.52%



Information regarding PCN cancer outcomes has been sought but not found, however district level data for 2017-19 suggest survival rates are lower across Wigan.

Fingertips PHE (2017-19) Per 100,000 Population	England	Wigan
Under 75 Mortality from Cancer	129.2	145.2
Under 75 Mortality from Cancer Considered Preventable	54.1	69.8



Cardiovascular Disease - Primary Prevention (30-74 years)



Utilisation Management Unit

Data Source: Quality Outcomes Framework, 2019/20

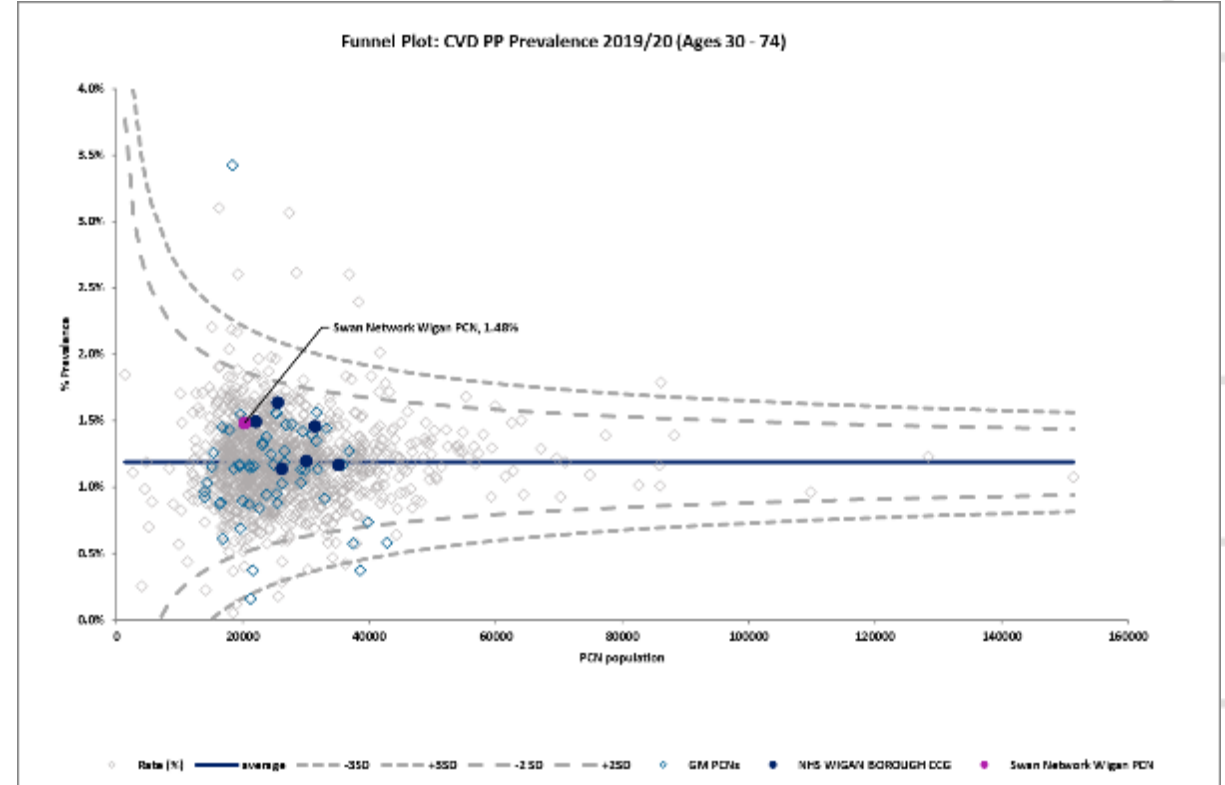
Swan Network Wigan PCN CVD-PP	Practice Prevalence
Bryn Cross Surgery	1.85%
Hawley Brook Medical Practice	1.36%
Marus Bridge Practice	1.71%
Medicentre	1.07%
Saxena L	1.60%
Shakespeare Surgery	0.94%
The Chandler Surgery	1.53%
Zaman	1.61%
PCN Average	1.48%

GM Average	England Average
1.16%	1.19%

Swan Network Wigan PCN's CVD-PP prevalence is higher than the national average.

2019/20 data show that 100% of this cohort who had a recorded CVD risk assessment score of $\geq 20\%$ in the preceding 12 months were treated with statins.

All PCNs in Wigan Borough had achievement of 100%.



Information regarding PCN cardiovascular disease outcomes has been sought but not found, however district level data for 2017-19 suggest poorer outcomes across Wigan.

Fingertips PHE (2017-19) Per 100,000 Population	England	Wigan
Under 75 Mortality from all Cardiovascular diseases	70.4	93.3
Under 75 Mortality from Cardiovascular Disease Considered Preventable	28.2	36.1

Chronic Obstructive Pulmonary Disease (COPD)

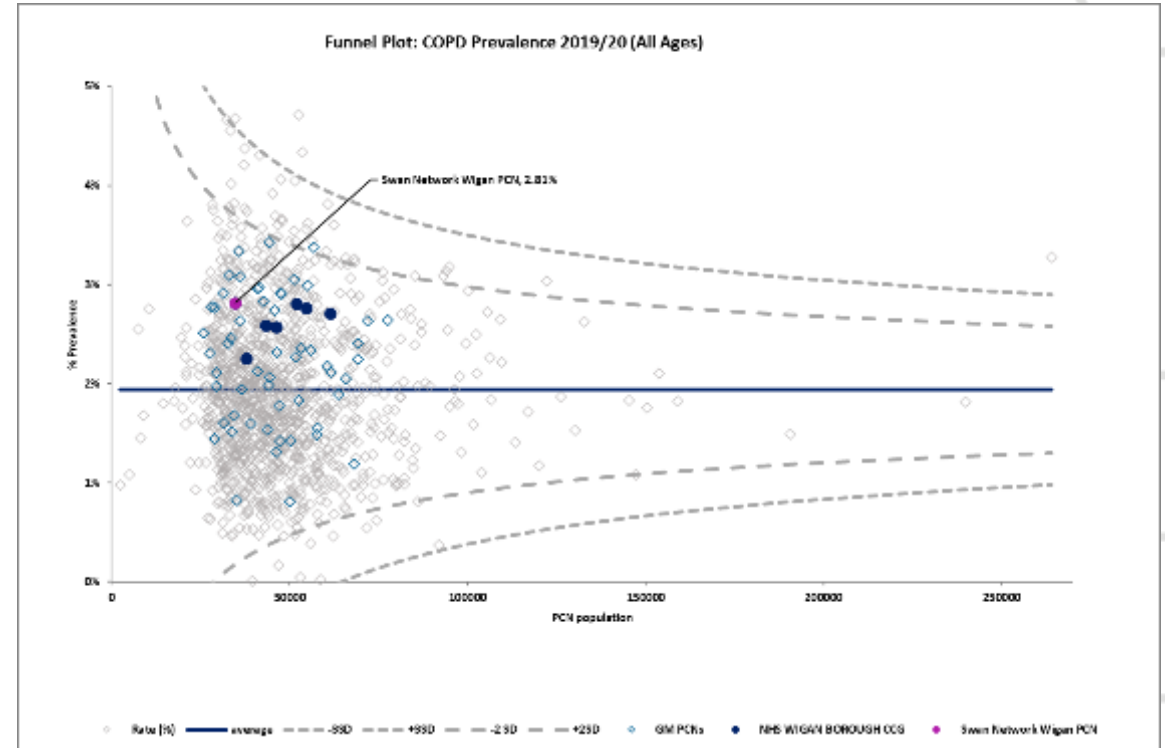
Data Source: Quality Outcomes Framework, 2019/20

Swan Network Wigan PCN COPD	Practice Prevalence
Bryn Cross Surgery	2.64%
Hawkley Brook Medical Practice	2.52%
Marus Bridge Practice	4.90%
Medicentre	2.64%
Saxena L	1.95%
Shakespeare Surgery	2.83%
The Chandler Surgery	2.40%
Zaman	1.89%
PCN Average	2.81%

GM Average	England Average
2.33%	1.94%

As with all Wigan Borough PCNs, Swan Network Wigan PCN's COPD prevalence is above the national average.

2019/20 data show that 90.48% were in receipt of a COPD review in the preceding 12 months. North Wigan PCN and Taba Wigan PCN had the highest achievement across Wigan Borough.



Information regarding PCN respiratory disease outcomes has been sought but not found, however district level data for 2017-19 suggest poorer outcomes across Wigan.

Fingertips PHE (2017-19) Per 100,000 Population	England	Wigan
Under 75 Mortality from Respiratory Disease	34.2	48.7
Under 75 Mortality from Respiratory Disease Considered Preventable	20.0	24



Dementia

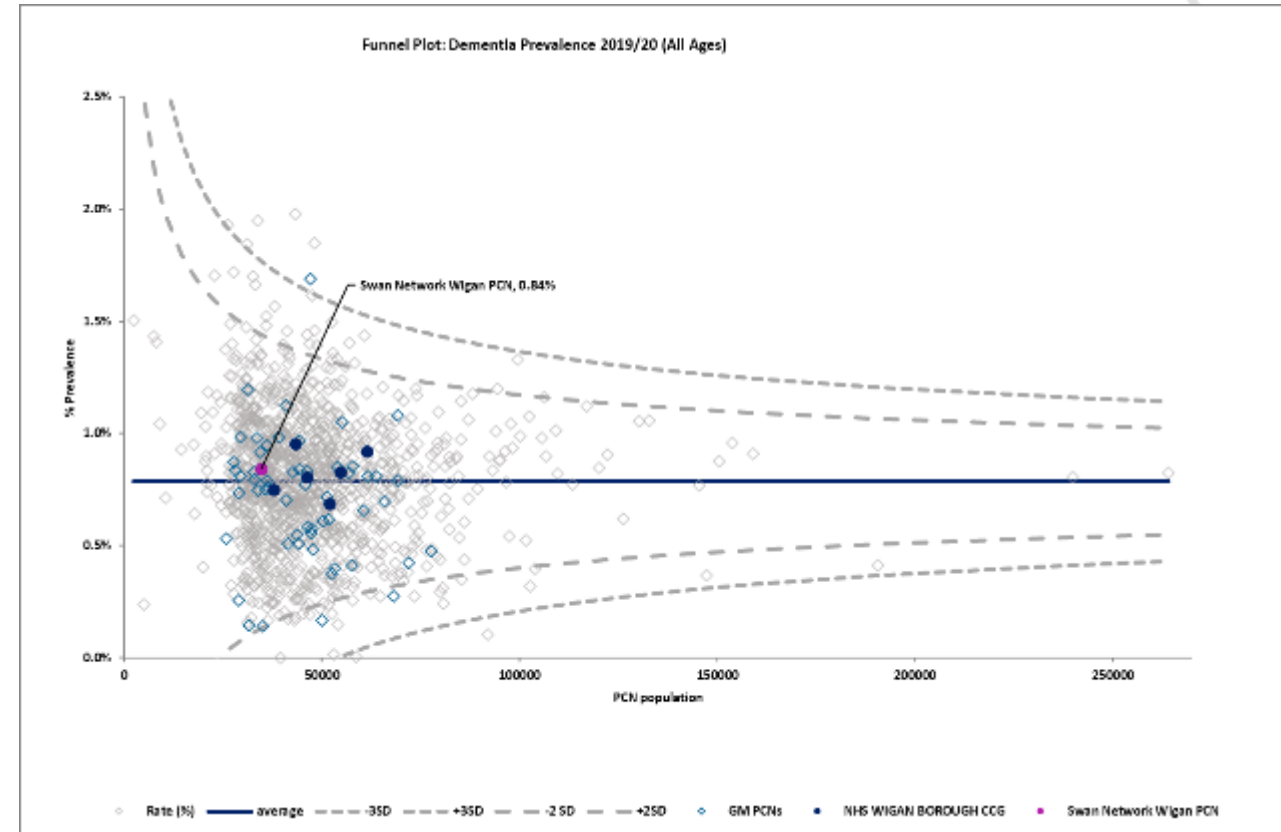
Data Source: Quality Outcomes Framework, 2019/20

Swan Network Wigan PCN Dementia	Practice Prevalence
Bryn Cross Surgery	0.97%
Hawley Brook Medical Practice	1.04%
Marus Bridge Practice	0.61%
Medicentre	0.96%
Saxena L	0.54%
Shakespeare Surgery	0.68%
The Chandler Surgery	0.79%
Zaman	1.08%
PCN Average	0.84%

GM Average	England Average
0.73%	0.79%

2019/20 data show that 86.54% had their care plan reviewed in a face-to-face meeting in the preceding 12 months.

Taba Wigan PCN had the highest achievement across Wigan Borough at 88.65%.



Swan Network Wigan PCN's dementia prevalence is comparable to the national rate.



Diabetes (17 years+)

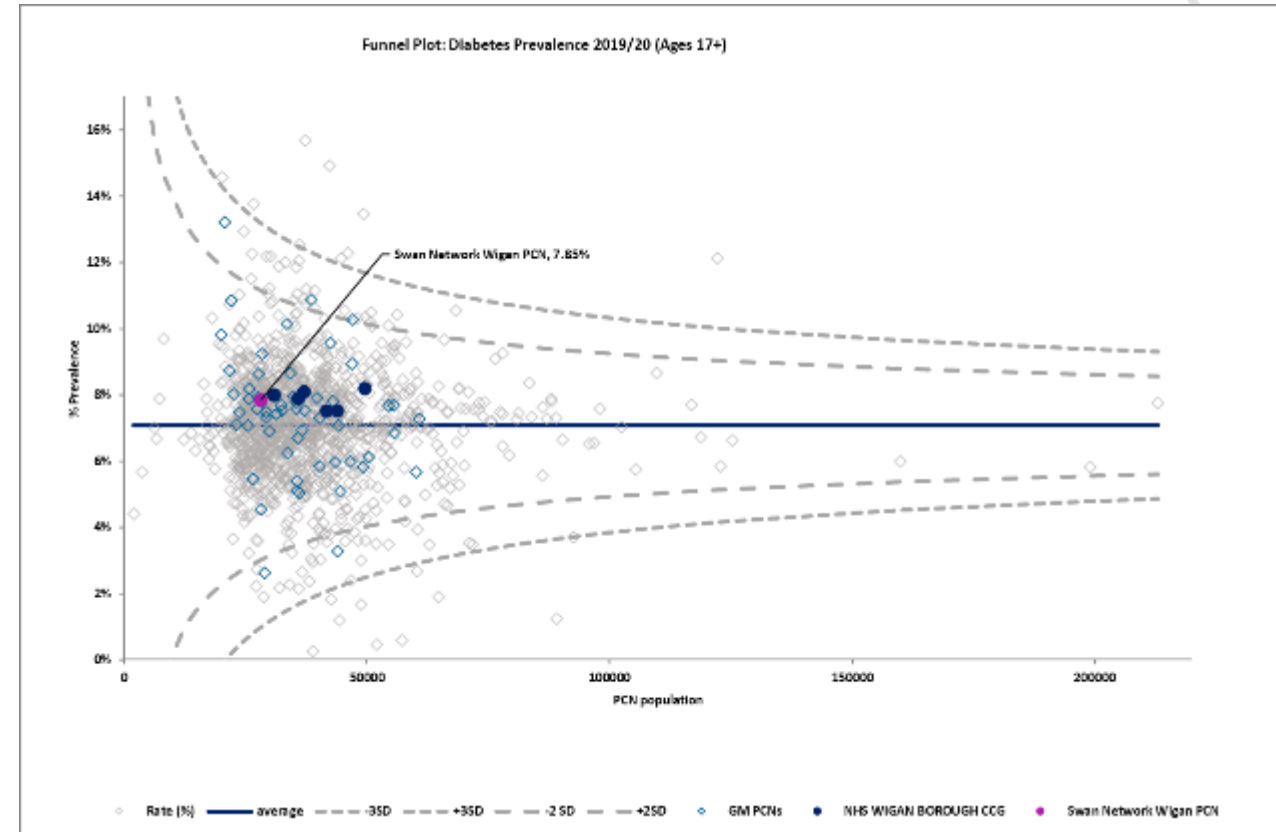
Data Source: Quality Outcomes Framework, 2019/20

Swan Network Wigan PCN Diabetes	Practice Prevalence
Bryn Cross Surgery	7.90%
Hawley Brook Medical Practice	8.39%
Marus Bridge Practice	8.65%
Medicentre	7.57%
Saxena L	6.74%
Shakespeare Surgery	8.12%
The Chandler Surgery	7.18%
Zaman	8.03%
PCN Average	7.85%

GM Average	England Average
7.42%	7.08%

2019/20 data show in the absence of moderate or severe frailty, that for 76.80% their last IFCC-HbA1c was 58 mmol/mol or less in the preceding 12 months. This was the highest achievement across Wigan Borough.

91.46% were recorded as being in receipt of a foot examination and risk classification within the preceding 12 months. Hindley PCN had the highest achievement across Wigan Borough with 97.52%



Swan Network Wigan PCN's diabetes prevalence is slightly higher than the national average.



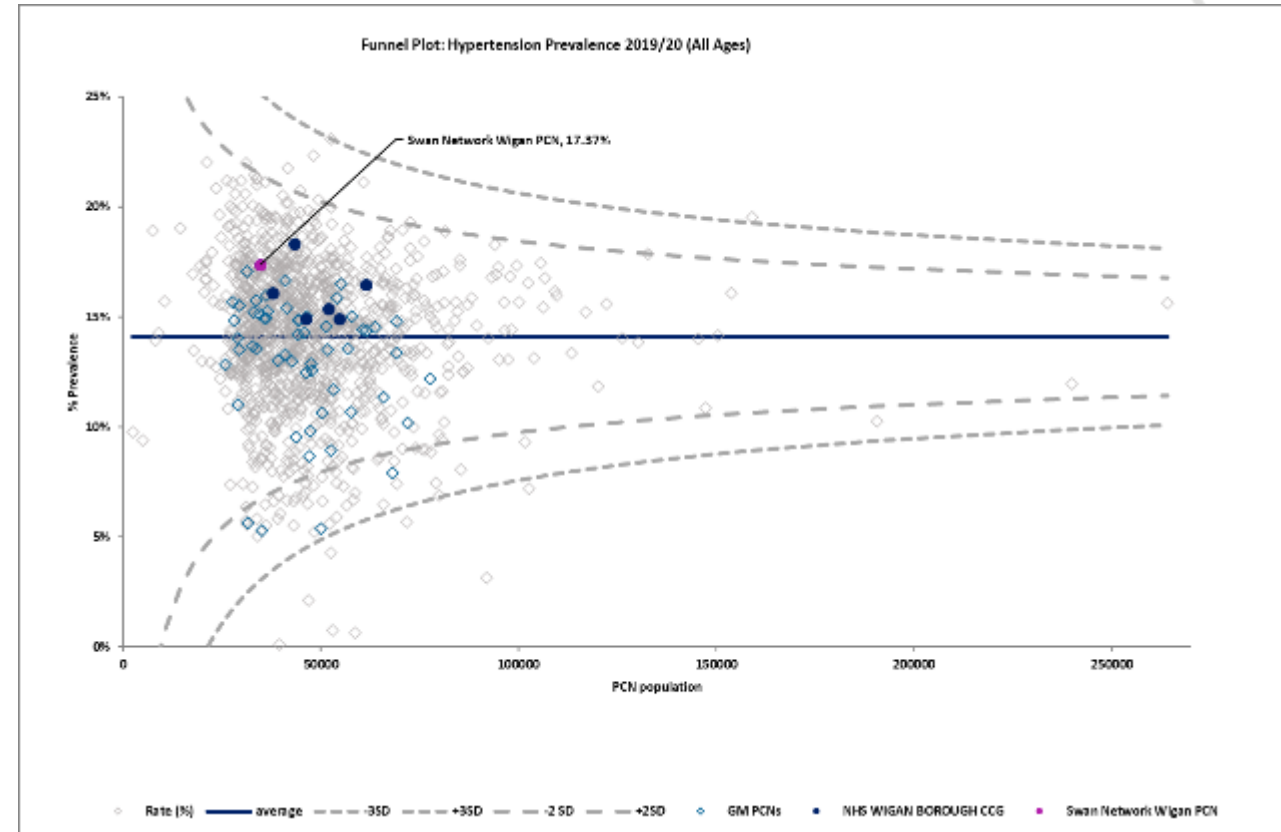
Hypertension

Data Source: Quality Outcomes Framework, 2019/20

Swan Network Wigan PCN Hypertension	Practice Prevalence
Bryn Cross Surgery	20.41%
Hawkley Brook Medical Practice	18.83%
Marus Bridge Practice	16.59%
Medicentre	20.92%
Saxena L	14.88%
Shakespeare Surgery	13.09%
The Chandler Surgery	13.00%
Zaman	18.54%
PCN Average	17.37%

GM Average	England Average
13.53%	14.09%

2019/20 data show for those aged 79 years or under, that for 78.75% their last blood pressure recording was 140/90 mmHg or less in the preceding 12 months. Leigh PCN had the highest achievement across Wigan Borough at 79.91%.



Swan Network Wigan PCN's hypertension prevalence was higher than the national rate.



Learning Disability

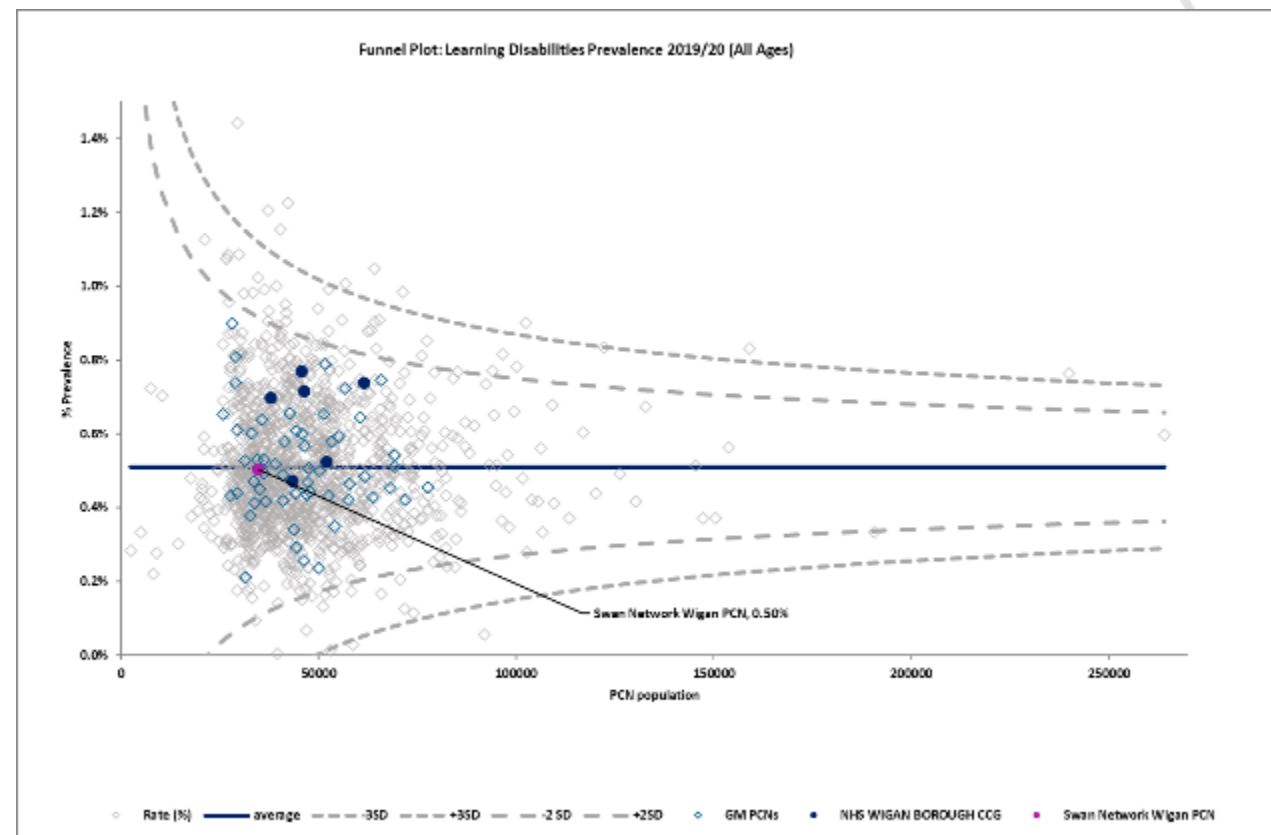
Data Source: Quality Outcomes Framework, 2019/20

Swan Network Wigan PCN Learning Disability	Practice Prevalence
Bryn Cross Surgery	0.51%
Hawkley Brook Medical Practice	0.52%
Marus Bridge Practice	0.58%
Medicentre	0.59%
Saxena L	0.41%
Shakespeare Surgery	0.47%
The Chandler Surgery	0.57%
Zaman	0.31%
PCN Average	0.50%

GM Average	England Average
0.53%	0.51%

Annual health check data which has been located by CCG show there has been an increase in the percentage of health checks completed, achievement rates were above GM and national levels in 2019/20.

Learning Disabilities Health Check Scheme, NHS Digital	2018/19	2019/20
Wigan Borough CCG	51.0%	59.5%
GM	52.5%	55.9%
England	51.3%	51.9%



Swan Network Wigan PCN's learning disability prevalence is comparable to the national rate.



Severe Mental Health

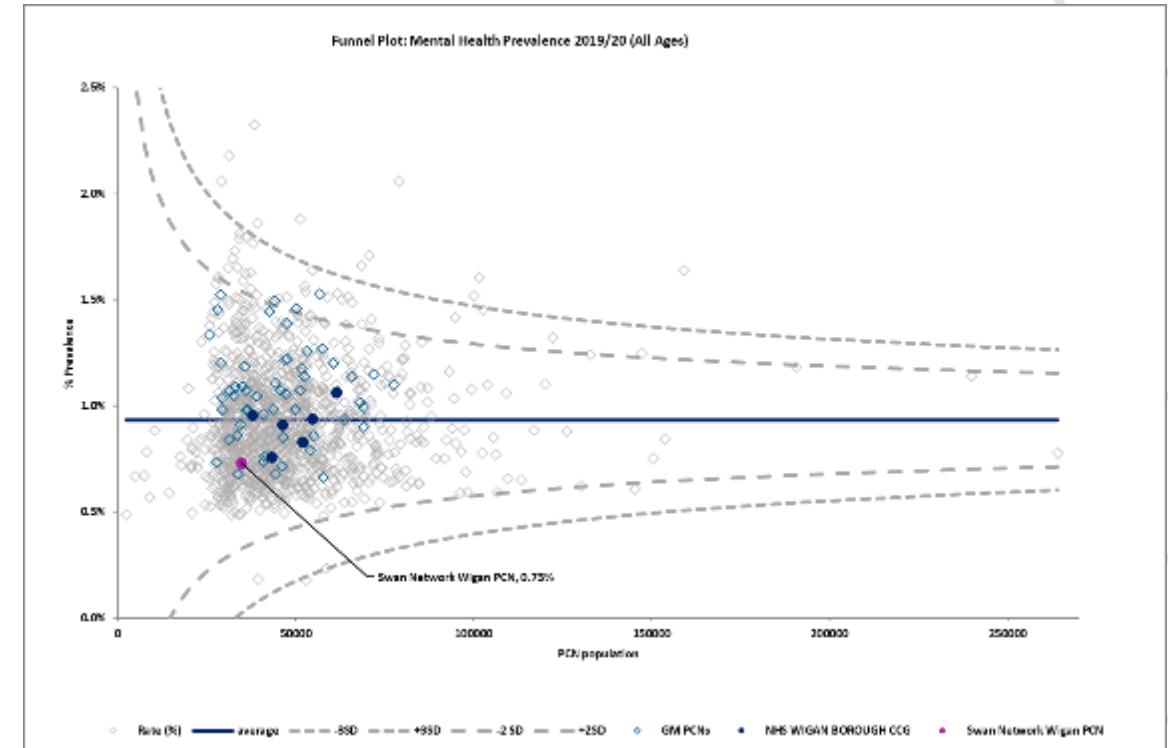
Data Source: Quality Outcomes Framework, 2019/20

Swan Network Wigan PCN Severe Mental Health	Practice Prevalence
Bryn Cross Surgery	0.77%
Hawkley Brook Medical Practice	0.68%
Marus Bridge Practice	1.06%
Medicentre	0.46%
Saxena L	0.44%
Shakespeare Surgery	1.09%
The Chandler Surgery	0.70%
Zaman	0.62%
PCN Average	0.73%

GM Average	England Average
1.03%	0.93%

2019/20 data show that 87.96% of those on the severe mental health register had a comprehensive care plan documented in their care record in the preceding 12 months. Hindley PCN had the highest achievement across Wigan Borough with 95.83%.

Information regarding PCN Mental Health outcomes has been sought but not found, however district level data suggest a higher level of intentional self-harm across Wigan, when benchmarked against national figures.



Swan Network Wigan PCN's severe mental health prevalence is below the national average.

Fingertips PHE Per 100,000 Population	England	Wigan
Suicide Rate (2018/20)	10.4	13.6
Emergency Hospital Admissions for Intentional Self-Harm (2019/20)	192.6	349.4



Visual Impairment

Data regarding the number of Swan Network Wigan PCN adults who have a moderate or severe visual impairment has been sought but not found. Estimated numbers with projections to 2040 that are available on an Wigan footprint, suggest increasing prevalence attributed to ageing populations. Whilst some sight loss may be correctable, age related macular degeneration is the most common cause of registrable sight loss in older people.

Wigan	2020	2025	2030	2035	2040
People aged 18-64 predicted to have a serious visual impairment	128	129	129	128	128
People aged 65-74 predicted to have a moderate or severe visual impairment	1,994	1,926	2,212	2,470	2,414
People aged 75 and over predicted to have a moderate or severe visual impairment	3,435	4,129	4,328	4,613	5,183
Total	5,557	6,184	6,669	7,211	7,725



Hearing Loss



Utilisation Management Unit

Data regarding how many Swan Network Wigan PCN adults have hearing loss has been sought but not found.

Estimated numbers with projections to 2040 available on an Wigan footprint suggest increasing prevalence attributed to an ageing population.

Hearing loss is a common but often unacknowledged long term condition that can have an adverse impact on a person's health and quality of life.

Wigan Some Hearing Loss	2020	2025	2030	2035	2040
People aged 18-64 predicted to have some hearing loss	20,265	21,323	21,018	20,318	19,922
People aged 65-74 predicted to have some hearing loss	16,612	15,646	17,707	20,034	19,952
People aged 75 -84 predicted to have some hearing loss	14,880	18,051	18,807	18,373	21,274
People aged 85+ predicted to have some hearing loss	6,028	6,918	8,424	10,543	10,786
Total	57,785	61,938	65,956	69,268	71,934
Figures may not sum due to rounding					

Wigan Severe Hearing Loss	2020	2025	2030	2035	2040
People aged 18-64 predicted to have severe hearing loss	1,213	1,291	1,273	1,212	1,183
People aged 65-74 predicted to have severe hearing loss	1,073	1,007	1,138	1,290	1,287
People aged 75 -84 predicted to have severe hearing loss	1,978	2,395	2,781	2,554	2,880
People aged 85+ predicted to have severe hearing loss	1,439	1,652	2,011	2,517	2,575
Total	5,703	6,345	7,203	7,574	7,925
Figures may not sum due to rounding					



07

Disease Prevention





7.1 Life Style



Physical Activity

Information regarding physical activity was only locatable at a district level. No district figures on the percentage of physically active children and young people were available across Greater Manchester for 2019/20. For 2018/19 the percentage of physically active children and young people was slightly higher in Wigan than in England as a whole.

Fingertips PHE	England	Wigan
Percentage of Physically Active Children and Young People (2018/19)	46.8%	48.4%
Percentage of Physically Active Adults (2019/20)	66.4%	60.7%

For the period 2019/20, data suggest when benchmarked against national figures, a higher proportion of physically inactive adults in Wigan.





Obesity (18 years+)

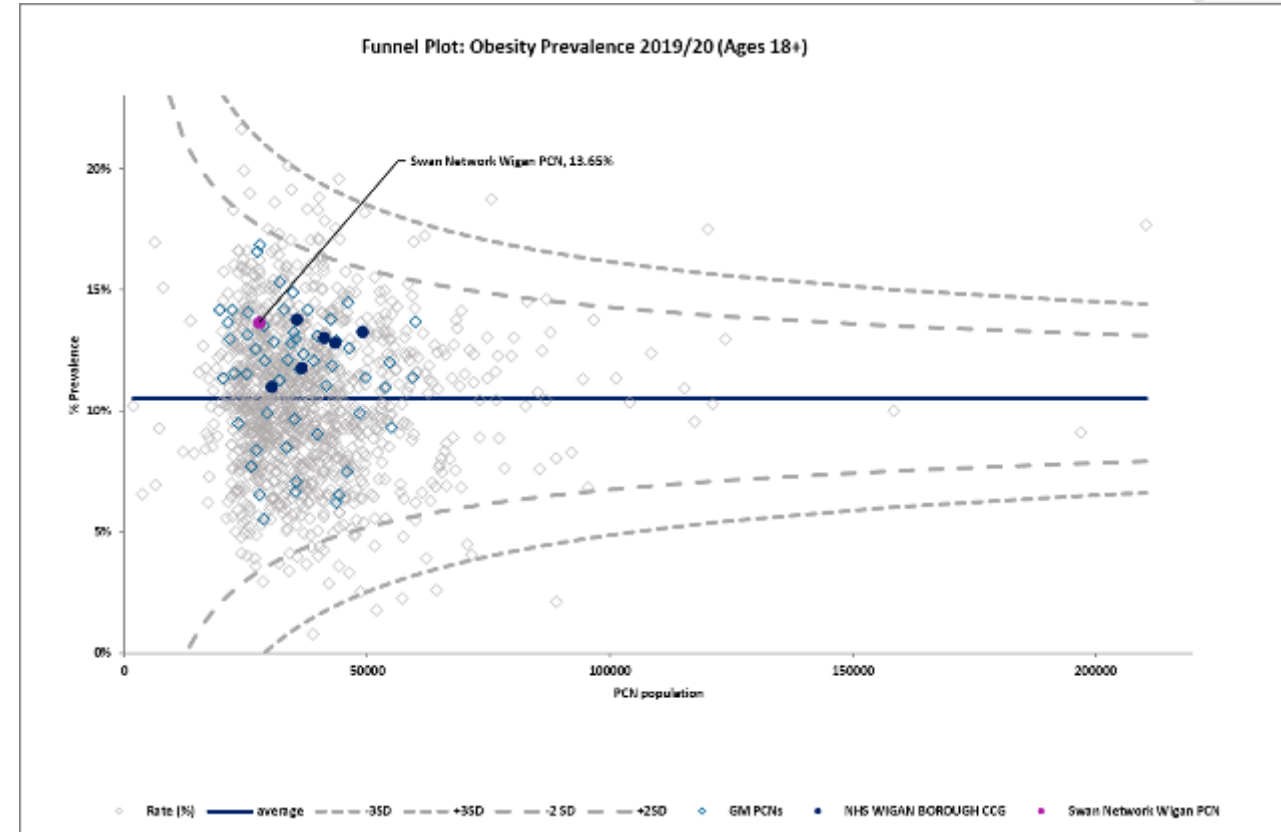
Data Source: Quality Outcomes Framework, 2019/20

Swan Network Wigan PCN Obesity	Practice Prevalence
Bryn Cross Surgery	14.62%
Hawley Brook Medical Practice	13.68%
Marus Bridge Practice	13.88%
Medicentre	11.91%
Saxena L	17.74%
Shakespeare Surgery	14.25%
The Chandler Surgery	11.17%
Zaman	13.61%
PCN Average	13.65%

GM Average	England Average
11.58%	10.51%

Data regarding childhood obesity has only been locatable at a district level;

Fingertips PHE	England	Wigan
Year 6: Prevalence of Overweight including Obesity (2019/20)	35.2%	38.6%



Swan Network Wigan PCN's obesity prevalence is higher than the national average.



Smoking (15 years+)

Data Source: Quality Outcomes Framework, 2019/20

Swan Network Wigan PCN Smoking	Practice Prevalence
Bryn Cross Surgery	11.94%
Hawkley Brook Medical Practice	10.68%
Marus Bridge Practice	14.11%
Medicentre	13.61%
Saxena L	9.89%
Shakespeare Surgery	19.32%
The Chandler Surgery	13.80%
Zaman	14.89%
PCN Average	13.50%

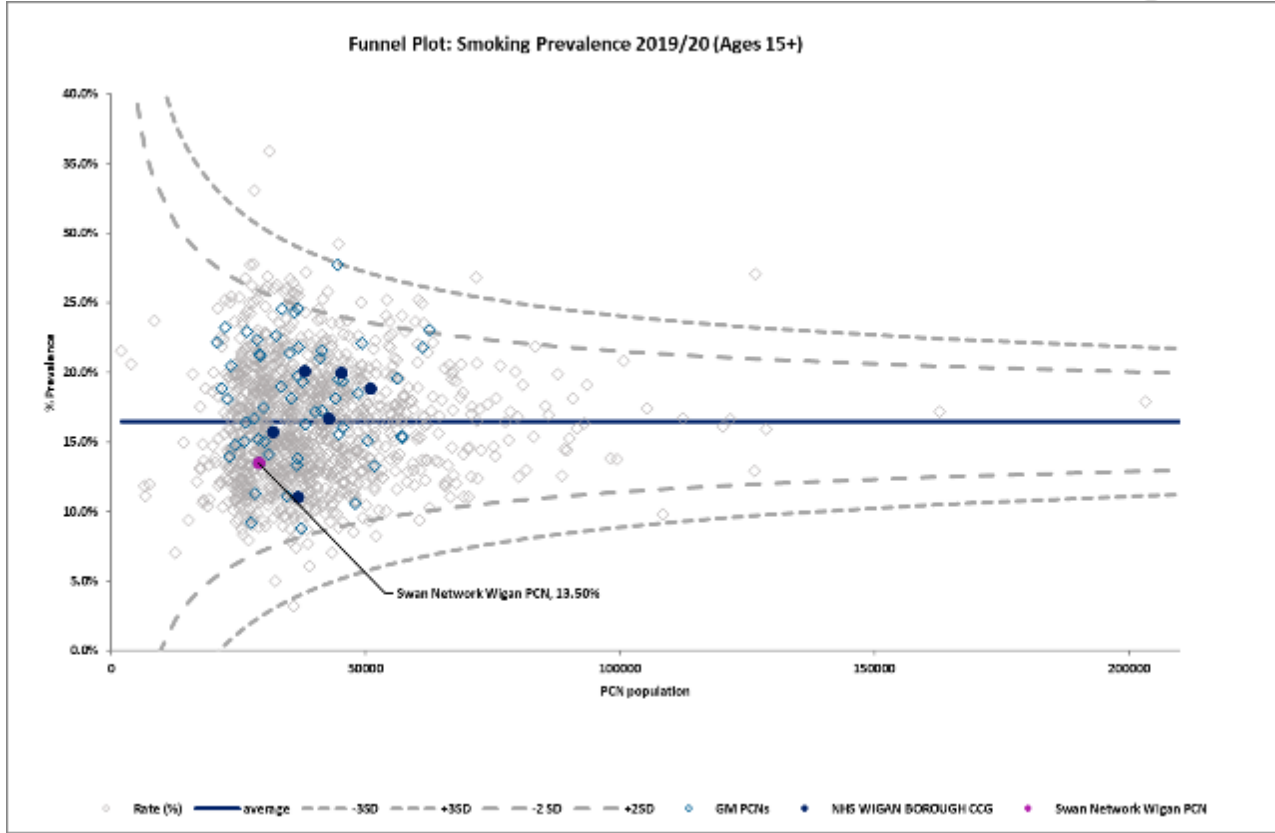
GM Average	England Average
18.16%	16.47%

2019/20 data show that 93.41% of smokers had a record of an offer of support and treatment within the preceding 24 months.

Hindley PCN had the highest achievement across Wigan Borough with 93.82%.

Data regarding smoking in pregnancy has only been locatable at a district level;

Fingertips PHE	England	Wigan
Smoking Status at Time of Delivery (2019/20)	10.4%	15.1%



Swan Network Wigan PCN's smoking prevalence is lower than the national rate.

Data regarding the prevalence of e-cigarette use have been sought but not found.

Tooth Decay in 3 Year Olds

Mean severity of tooth decay in children aged three years based on the mean number of teeth per child sampled which were either actively decayed or had been filled or extracted.

	2012/13	2019/20
Wigan	0.16	0.47
NW	0.47	0.42
England	0.36	0.31

Chlamydia Detection Rates

All chlamydia diagnoses in 15 to 24 year olds attending specialist and non-specialist sexual health services, who are residents in England, expressed as a rate per 100,000 population.

	2015	2016	2017	2018	2019	2020
Wigan	1954	2016	2140	2347	2068	1392
NW	2361	2277	2168	2176	1990	1249
England	1914	1917	1929	1999	2043	1420

Accidental Poisoning in 0-4 Year Olds

Emergency hospital admissions per 100,000 resident population due to accidental poisoning in children aged 0-4 years.

	2014/15-16/17	2015/16-17/18	2016/17-18/19	2017/18-19/20
Wigan	165.8	141.8	107.6	108.5
NW	217.5	204.8	196.6	180.3
England	145.5	136.1	126.6	118.2

Teenage Mothers

Percentage of delivery episodes, where the mother is aged under 18 years.

	2016/17	2017/18	2018/19	2019/20
Wigan	0.6%	0.9%	0.9%	1.1%
NW	0.9%	0.9%	0.8%	0.8%
England	0.8%	0.7%	0.6%	0.7%



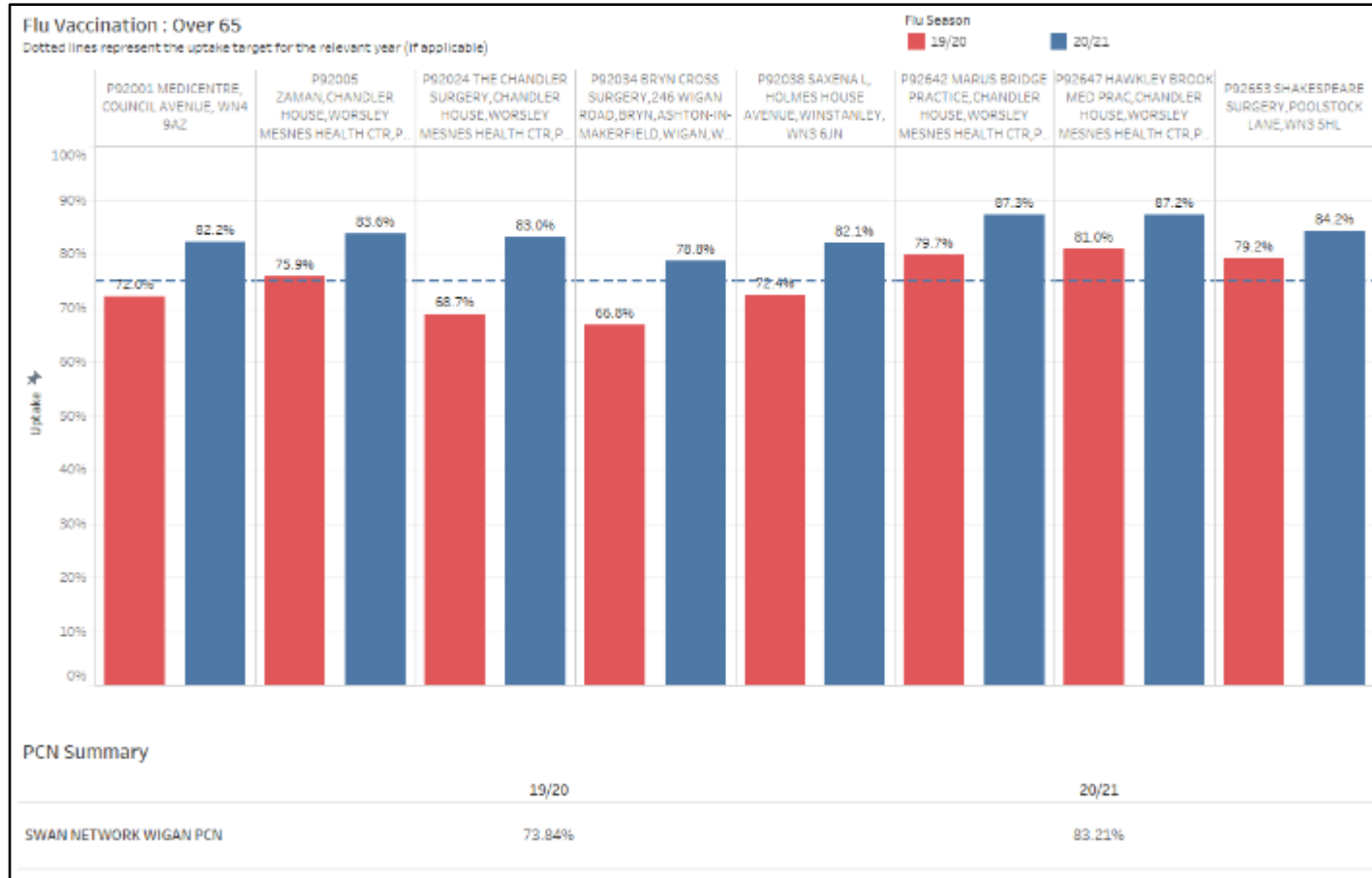
7.2 Immunisation





Flu Vaccination: 65 & Over

Data Source: GM HSCP



2019/20 Flu Season: Swan Network Wigan PCN 65 & over vaccination uptake was 73.84%.

4 of 8 practices met the 75% vaccination target in 2019/20.

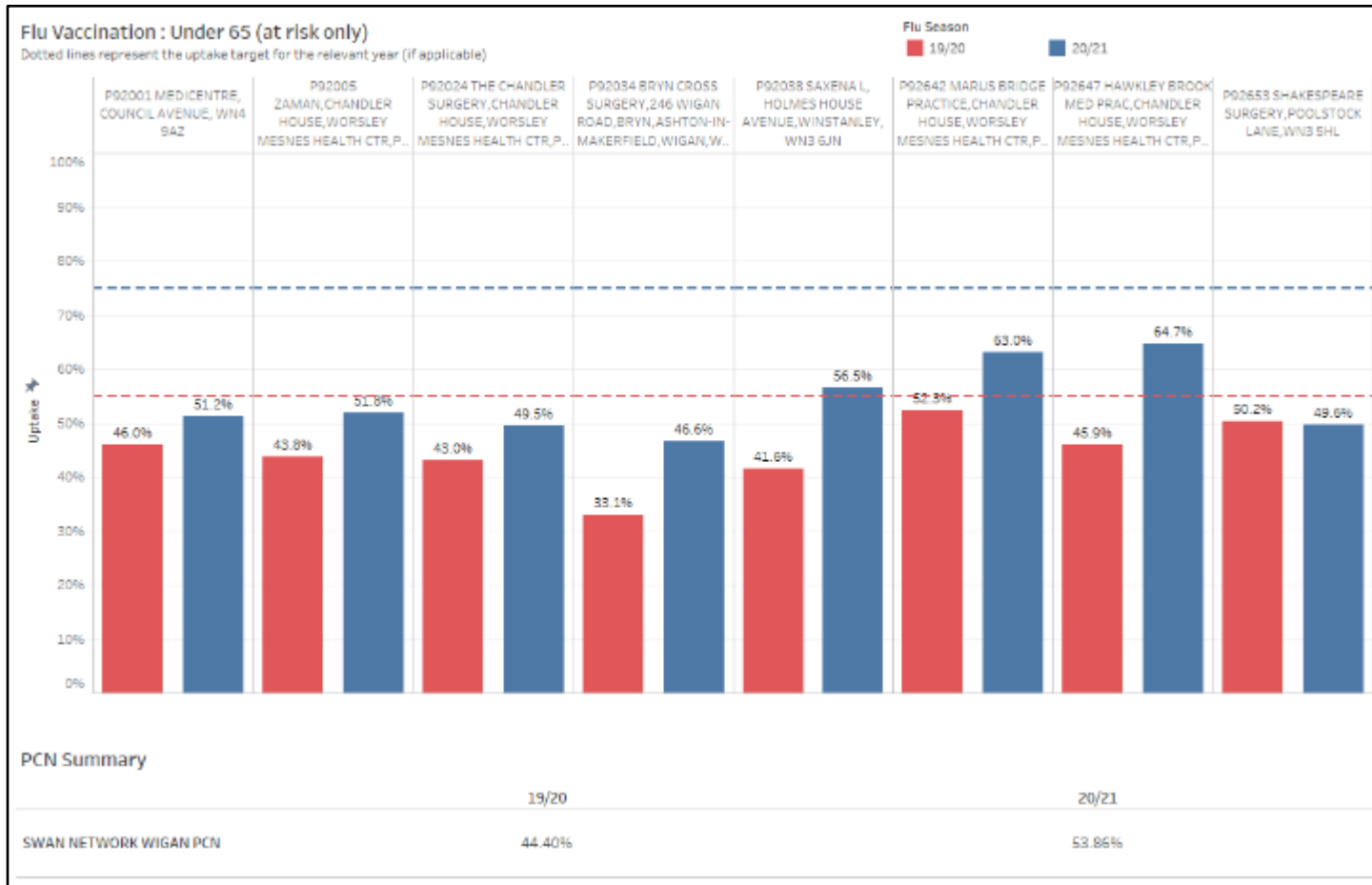
2020/21 Flu Season: Vaccine uptake increased with an overall rate for the PCN of 83.21%.

All 8 practices met the 75% vaccination target in 2020/21.



Flu Vaccination: Under 65 (at risk only)

Data Source: GM HSCP



2019/20 Flu Season: Swan Network Wigan PCN's under 65 at risk only vaccination uptake was 44.40%.

No practices reached the 55% uptake target in 2019/20.

2020/21 Flu Season: Swan Network Wigan PCN's under 65 at risk only vaccination uptake increased to 53.86%.

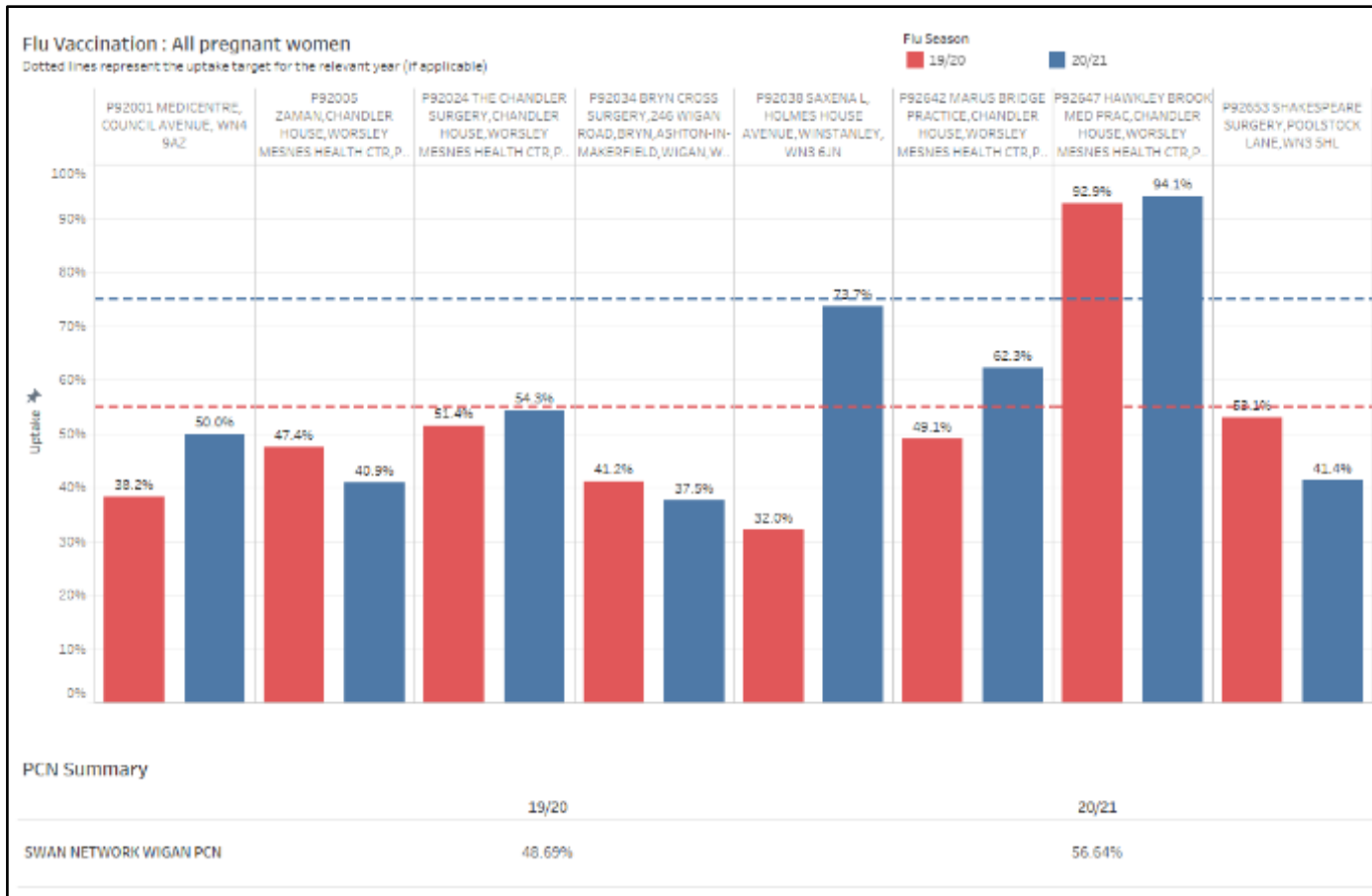
However, no practices reached the revised target of 75% in 2020/21.



Flu Vaccination: All Pregnant Women

Utilisation Management Unit

Data Source: GM HSCP



2019/20 Flu Season: Swan Network Wigan PCN's all pregnant women vaccination uptake was 48.69%.

1 of 8 practices reached the 55% uptake target in 2019/20.

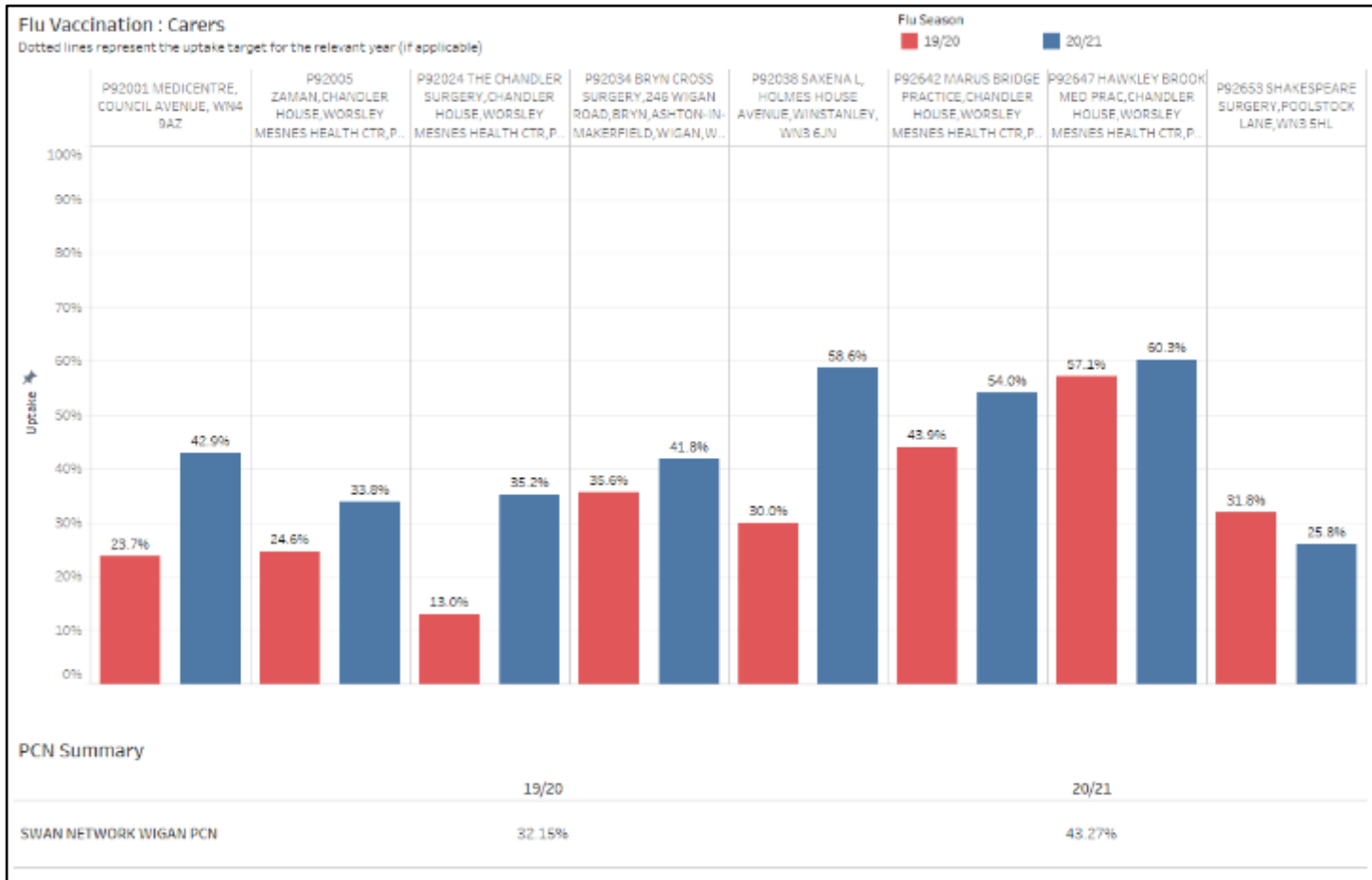
2020/21 Flu Season: Uptake across the PCN was 56.64%, higher than that of the previous year.

1 of 8 practices reached the revised 75% uptake target in 2020/21.



Flu Vaccination: Carers

Data Source: GM HSCP



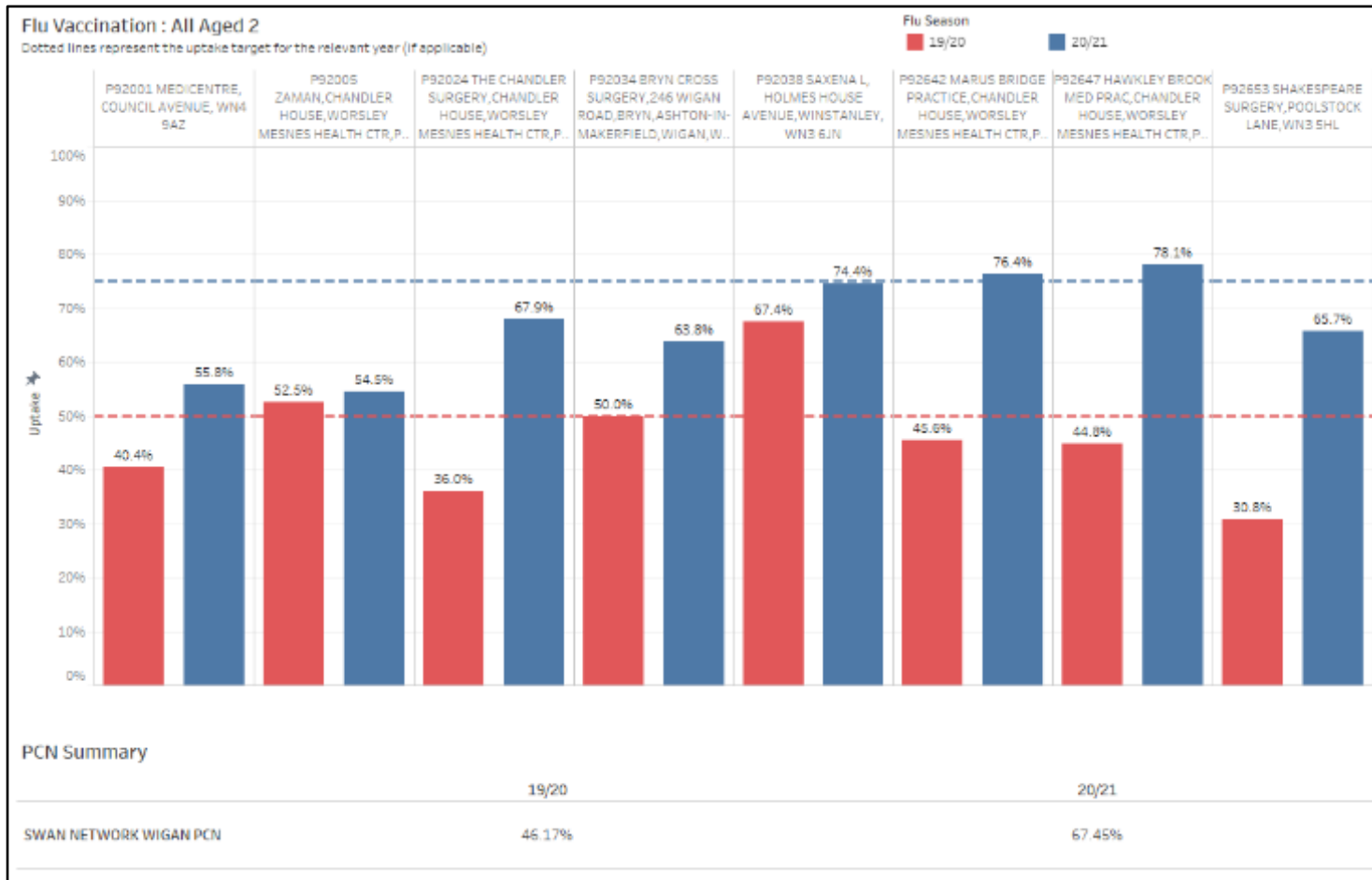
2019/20 Flu Season: Swan Network Wigan PCN's carers vaccination uptake was 32.15%.

2020/21 Flu Season: Uptake was 43.27%, an increase from that of the previous year.



Flu Vaccination: All Aged 2

Data Source: GM HSCP



2019/20 Flu Season: Swan Network Wigan PCN's all aged 2 vaccination uptake was 46.17%.

3 of 8 practices reached the target of 50% in 2019/20.

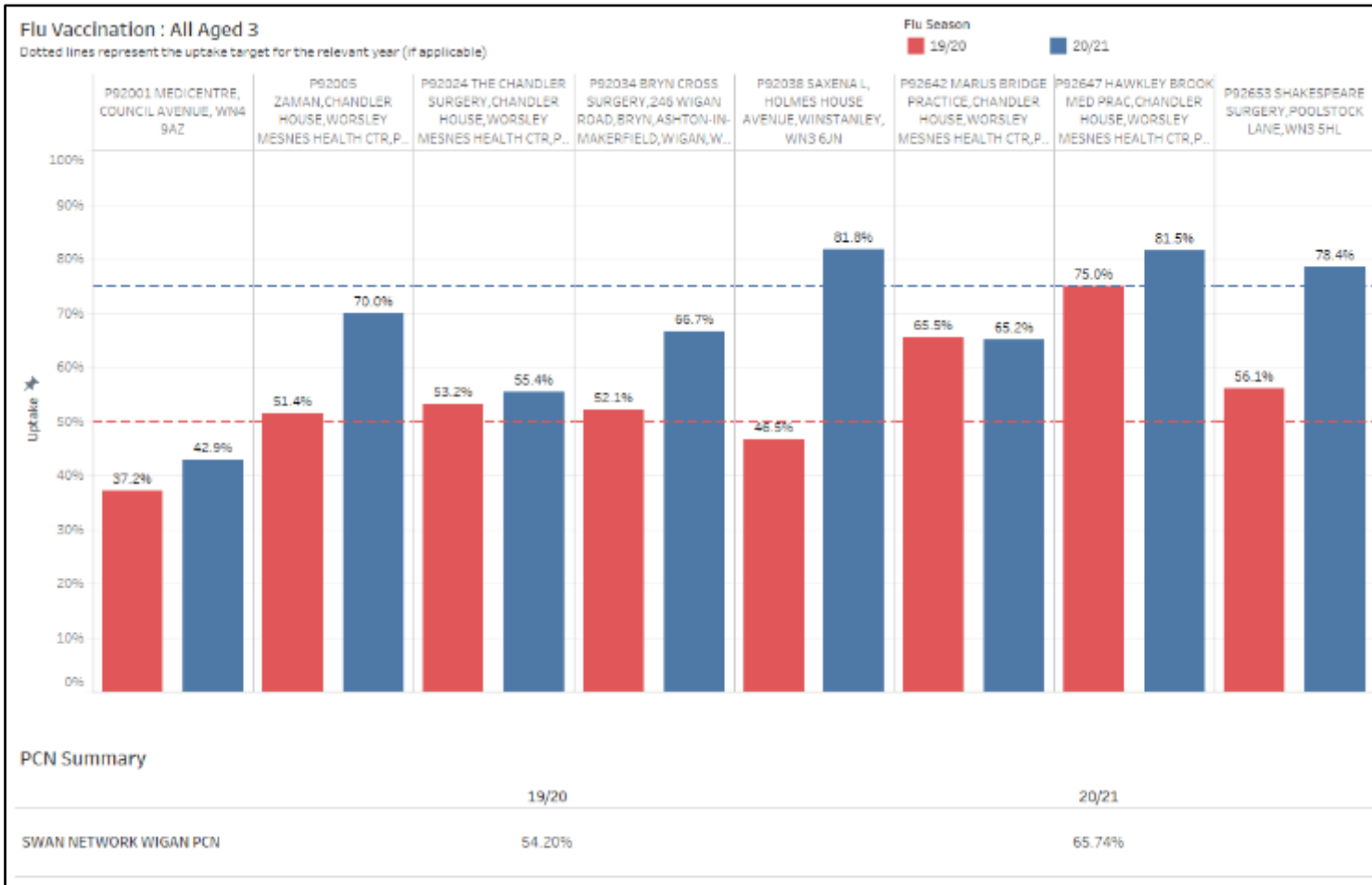
2020/21 Flu Season: Uptake across the PCN was higher than the previous year with a rate of 67.54%.

2 of 8 practices reached the revised 75% uptake target in 2020/21.



Flu Vaccination: All Aged 3

Data Source: GM HSCP



2019/20 Flu Season: Swan Network Wigan PCN's all aged 3 vaccination uptake was 54.20%.

6 of 8 practices reached the target of 50% in 2019/20.

2020/21 Flu Season: PCN uptake increased from that of the previous year at 65.74%.

3 of 8 practices reached the revised 75% uptake target in 2020/21



Child Immunisations Up to Five Years of Age (GP)

Utilisation Management Unit

Data Source: Child Health Information Systems, Public Health England, 2019/20

Expectation in the UK is that there is 95% coverage of all routine childhood immunisations for those up to five years of age (BMA, 2020).

6-in-1 Vaccine
3 doses at 8,12 & 16 weeks

Data Measure
% of children who received 3 doses of the 6-in-1 vaccine by their 1st birthday.

6-in-1 Vaccine	% Vaccinated
Swan Network Wigan	97.80%
North Wigan	96.74%
Taba Wigan	95.73%
Wigan Central	95.11%
Liga Wigan	94.77%
Leigh	94.06%
Hindley	93.68%
GM Average	93.47%
England Average	92.57%

Hib/ MenC Booster
1 dose at 1 year

Data Measure
% of children who received 1 dose of the Hib/ MenC booster (or 1 dose of the 6-in-1 vaccine and 1 dose of MenC) on or after their 1st birthday, up to their 2nd birthday.

Hib/MenC	% Vaccinated
Swan Network Wigan	97.83%
North Wigan	97.44%
Liga Wigan	94.41%
Wigan Central	93.44%
Taba Wigan	92.28%
Leigh	91.96%
Hindley	91.70%
GM Average	91.03%
England Average	90.56%

4-in-1 Preschool Booster Vaccine
1 dose from 3 years & 4 months

Data Measure
% of children who received a 4th dose of a diphtheria, tetanus, pertussis & polio containing vaccine given from 3 years & 4 months and before their 5th birthday.

4-in-1 Vaccine	% Vaccinated
Swan Network Wigan	94.51%
North Wigan	92.84%
Liga Wigan	92.51%
Taba Wigan	91.37%
Wigan Central	90.58%
Leigh	90.23%
Hindley	88.68%
GM Average	58.00%*
England Average	84.00%

* Bury, Oldham, HMR and Trafford CCGs reported very low vaccination numbers for the 4-in-1 preschool booster vaccine



Child Immunisations Up to Five Years of Age (GP)

Utilisation Management Unit

Data Source: Child Health Information Systems, Public Health England, 2019/20

Expectation in the UK is that there is 95% coverage of all routine childhood immunisations for those up to five years of age (BMA, 2020).

Pneumococcal (PCV) Vaccine
 For babies born before 1st January 2020: 2 doses at 8 & 16 weeks
 For babies born after 1st January 2020: 1 dose at 12 weeks

Pneumococcal (PCV) Booster Vaccine
 1 dose at 1 year

Data Measure
 % of children who received 2 doses of the Pneumococcal vaccine before their 1st birthday.

Data Measure
 % of children who received 1 dose of the Pneumococcal booster on or after their 1st birthday, up to their 2nd birthday.

PCV Vaccine	% Vaccinated
Swan Network Wigan	98.43%
North Wigan	96.74%
Liga Wigan	96.51%
Taba Wigan	95.92%
Wigan Central	95.43%
Leigh	94.88%
Hindley	94.07%
GM Average	94.95%
England Average	93.34%

PCV Booster	% Vaccinated
Swan Network Wigan	97.83%
North Wigan	97.21%
Liga Wigan	94.68%
Wigan Central	93.44%
Hindley	92.96%
Taba Wigan	92.28%
Leigh	92.26%
GM Average	94.95%
England Average	93.34%



Child Immunisations Up to Five Years of Age (GP)

Utilisation Management Unit

Data Source: Child Health Information Systems, Public Health England, 2019/20

Expectation in the UK is that there is 95% coverage of all routine childhood immunisations for those up to five years of age (BMA, 2020).

Rotavirus Vaccine
2 doses at 8 & 12 weeks

MenB Vaccine
3 doses at 8 & 16 weeks and 1 year

Data Measure
% of children who received 2 doses of the Rotavirus vaccine before 24 weeks of age.

Data Measure
% of children who received 2 doses of the MenB vaccine by their 1st birthday.

Rotavirus	% Vaccinated
Swan Network Wigan	96.23%
Wigan Central	95.11%
Liga Wigan	94.48%
North Wigan	93.98%
Taba Wigan	93.98%
Leigh	91.75%
Hindley	91.50%
GM Average	90.86%
England Average	90.25%

MenB Vaccine	% Vaccinated
Swan Network Wigan	98.43%
North Wigan	96.74%
Liga Wigan	96.22%
Taba Wigan	95.34%
Wigan Central	95.27%
Leigh	94.55%
Hindley	93.48%
GM Average	94.28%
England Average	92.58%



Child Immunisations Up to Five Years of Age (GP)

Utilisation Management Unit

Data Source: Child Health Information Systems, Public Health England, 2019/20

Expectation in the UK is that there is 95% coverage of all routine childhood immunisations for those up to five years of age (BMA, 2020).

MMR Vaccine
1st dose at 1 year

MMR Vaccine
2nd dose at 3 years & 4 months

Data Measure
% of children who received 1 dose of the MMR vaccine on or after their 1st birthday up to their 2nd birthday.

Data Measure
% of children who received 2 doses of the MMR vaccine by their 5th birthday (where the 1st dose was given on or after their 1st birthday).

MMR 1 st dose	% Vaccinated
North Wigan	97.44%
Swan Network Wigan	97.29%
Liga Wigan	94.15%
Wigan Central	93.72%
Leigh	92.11%
Taba Wigan	92.09%
Hindley	91.70%
GM Average	92.45%
England Average	90.68%

MMR 1 st & 2 nd dose	% Vaccinated
North Wigan	94.23%
Swan Network Wigan	93.96%
Liga Wigan	92.51%
Taba Wigan	92.09%
Wigan Central	90.30%
Leigh	90.23%
Hindley	88.50%
GM Average	88.82%
England Average	86.93%



7.3 Cancer Screening



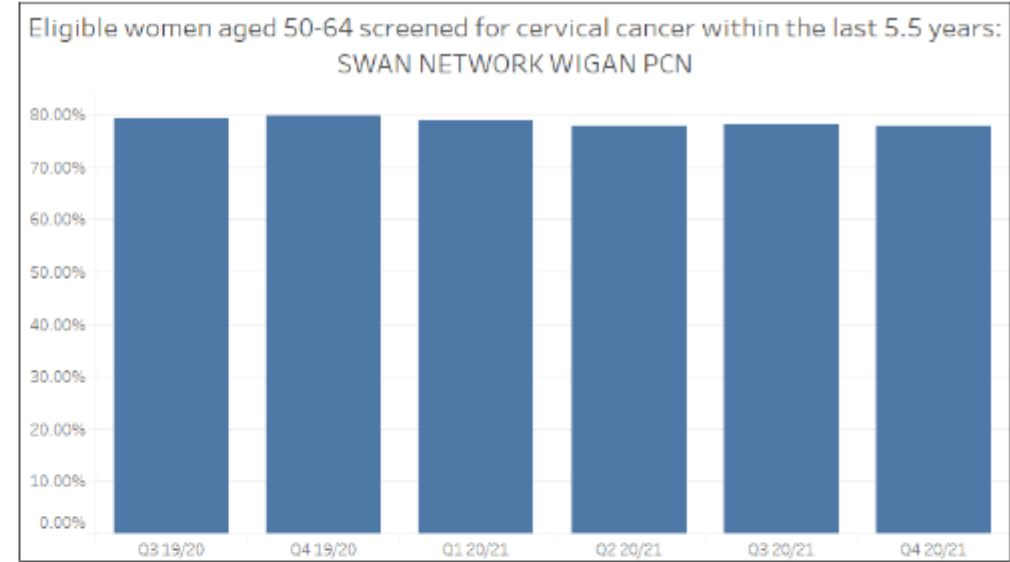
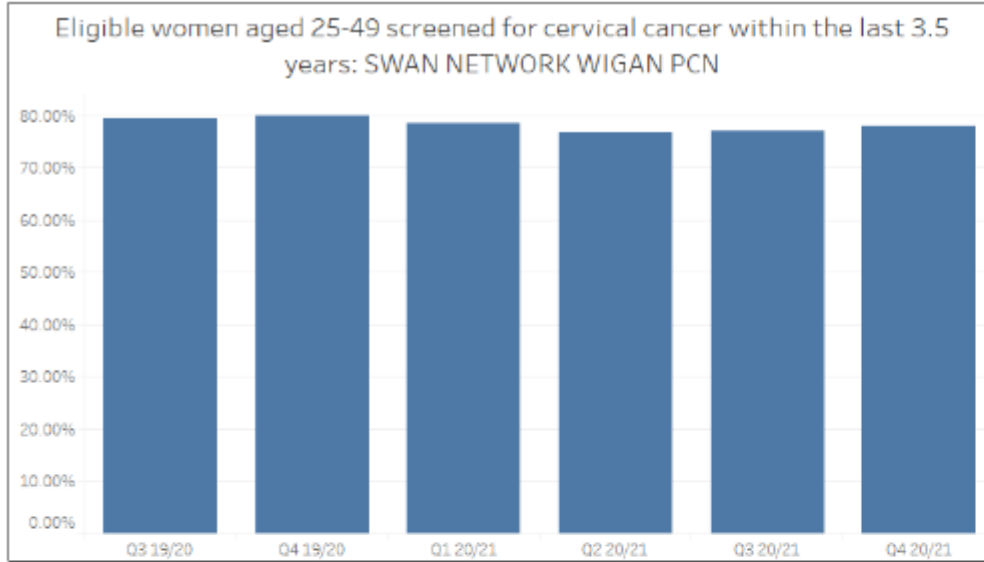
Cervical Cancer Screening

Data Source: Public Health England, Q3 2019/20 to Q4 2020/21



Acceptable threshold i.e. lowest level of performance screening services are expected to attain = 80% (PHE, 2020)

Utilisation Management Unit



	Q3 19/20	Q4 19/20	Q1 20/21	Q2 20/21	Q3 20/21	Q4 20/21
SWAN NETWORK WIGAN PCN	79.44%	79.85%	78.44%	76.75%	76.91%	77.97%
NHS WIGAN BOROUGH CCG	76.79%	77.16%	75.75%	74.58%	74.02%	74.54%
GM	71.13%	71.39%	69.74%	68.41%	67.97%	68.81%
England	70.64%	70.90%	69.34%	68.29%	68.09%	68.88%

	Q3 19/20	Q4 19/20	Q1 20/21	Q2 20/21	Q3 20/21	Q4 20/21
SWAN NETWORK WIGAN PCN	79.26%	79.77%	78.77%	77.92%	78.16%	77.82%
NHS WIGAN BOROUGH CCG	76.22%	76.30%	75.74%	75.17%	74.83%	74.80%
GM	76.01%	76.01%	75.40%	74.70%	74.26%	74.22%
England	76.37%	76.33%	75.80%	75.28%	74.99%	74.96%



Breast and Bowel Cancer Screening



Breast

Data were only locatable by Local Authority

NHS Breast Screening Programme: Coverage of women aged 53 - <71 by Local Authority, as at 31st March sourced from NHS Digital

PHE (2020);

Acceptable (lowest) threshold = 70%

Achievable (aspire to) threshold = 80%

	2019	2020
Wigan	75.38%	74.36%
GM	71.51%	70.17%
England	74.58%	74.17%



Bowel

Data were only locatable by CCG

The proportion of men and women aged 60 to 74 invited to participate in bowel cancer screening who adequately participate, sourced from Public Health England

PHE (2020);

Acceptable (lowest) threshold = 52%

Achievable (aspire to) threshold = 60%

	Q2 2020/21	Q3 2020/21	Q4 2020/21
Wigan Borough CCG	67.25%	68.24%	72.52%
GM	64.91%	65.99%	69.50%
England	68.68%	68.97%	71.04%

Note: Whilst data was collected for Q1 2020/21 it was reportedly withdrawn due to low numbers at the beginning of the pandemic



7.4 Early Years



Early Years Milestones



New birth visits

Proportion of infants receiving a new birth visit by a Health Visitor within 14 days of birth.

	2018/ 2019	2019/ 2020
Wigan	89.7%	88.1%
NW	87.9%	87.3%
England	88.8%	86.8%



Breastfeeding at 6-8 weeks

Percentage of infants that are totally or partially breastfed at age 6-8 weeks.

	2018/ 2019	2019/ 2020
Wigan	30.2%	32.7%
NW	38.9%	*
England	46.2%	48.0%



6-8 week reviews

Proportion of infants who received a 6-8 weeks review by the time they were 8 weeks old.

	2018/ 2019	2019/ 2020
Wigan	93.5%	92.8%
NW	88.2%	85.9%
England	85.4%	85.1%



12-month reviews

Proportion of children who received a 12-month development review by the time they turned 15 months.

	2018/ 2019	2019/ 2020
Wigan	93.4%	96.2%
NW	88.2%	88.5%
England	82.3%	83.6%



2- 2½ year reviews

Proportion of children who received a 2- 2½ year review by the time they turned 2½ years.

	2018/ 2019	2019/ 2020
Wigan	78.7%	86.3%
NW	83.3%	82.6%
England	77.6%	78.6%

* Value suppressed due to incompleteness of source data



08

Wider Determinants of Health

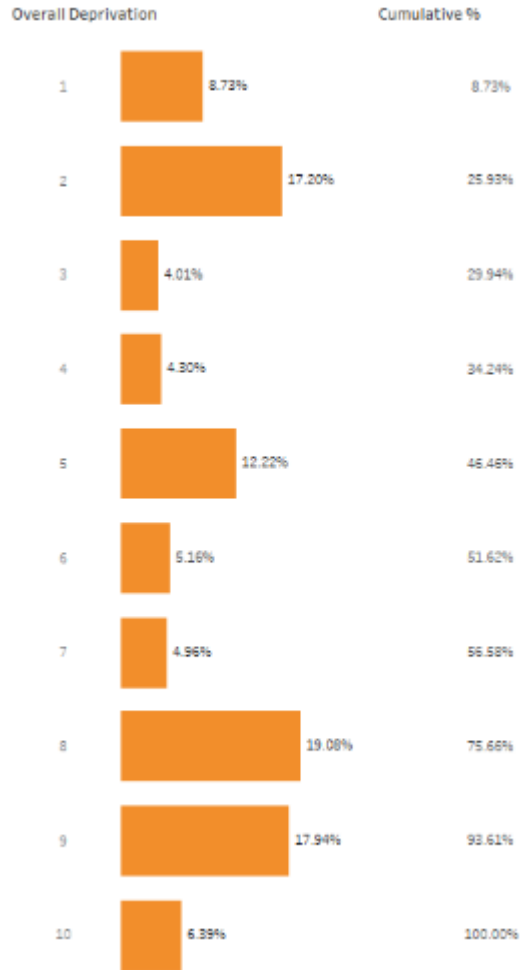




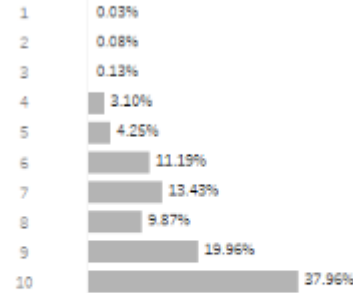
Index of Multiple Deprivation (IMD)

PCN population Deprivation Deciles

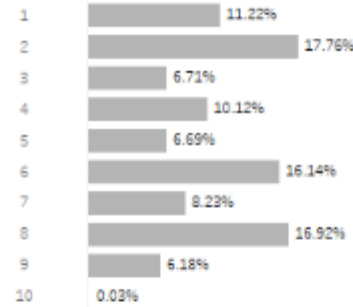
Charts show % of population in each decile. Decile 1=highest deprivation, decile 10=lowest deprivation.



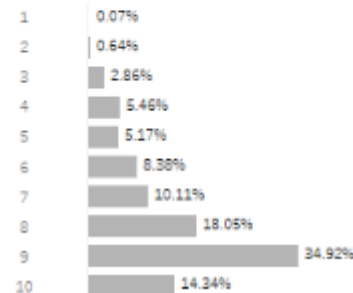
Barriers to Housing



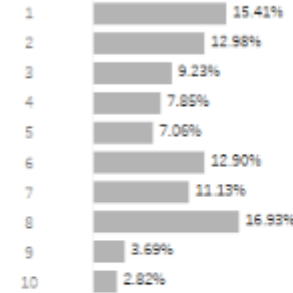
Employment



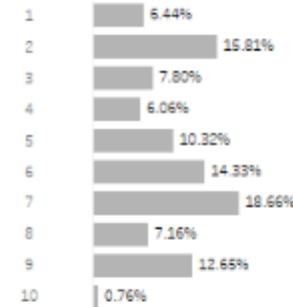
Living Environment



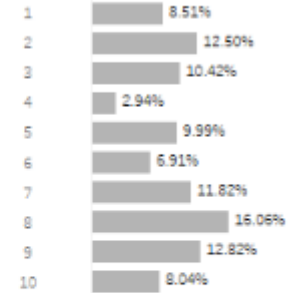
Crime



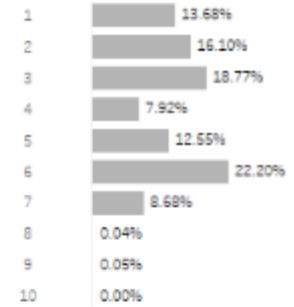
Education



Income



Health and Disability



25.93% of the Swan Network Wigan PCN population live in the top 20% of most deprived LSOAs in England.



Income and Children

Children (under 16 years of age) in RELATIVE low income families

‘Relative’ defined as a family income which is less than 60% of the median average income.

	2018/19	2019/20
Wigan	19.8%	19.8%
NW	22.8%	22.6%
England	18.2%	19.1%

Free school meals percentage uptake of all pupils (state funded nursery, primary, secondary or special school)

	2017	2018
Wigan	14.1%	14.2%
NW	16.1%	16.0%
England	13.9%	13.5%



Looked After Children

Rate per 10,000 resident population aged under 18 years

	Wigan	North West	England
2011	71	77	59
2012	71	76	59
2013	75	79	60
2014	73	81	60
2015	75	82	60
2016	72	82	60
2017	66	86	62
2018	70	91	64
2019	66	94	65
2020	77	97	67

Data Source: Fingertips, Public Health England



Child Development Milestones

Percentage of children who received a 2-2½ year review who were at or above the expected level in the five Ages and Stages Questionnaire-3 domains

	Wigan	North West	England
2017/18	88.8%	79.0%	83.3%
2018/19	86.9%	78.4%	92.9%
2019/20	88.0%	82.2%	83.3%

Percentage of children achieving at least the expected level of development in communication, language and literacy skills at the end of Reception (school readiness)

	Wigan	North West	England
2012/13	42.9%	55.6%	56.9%
2013/14	58.2%	61.0%	63.6%
2014/15	65.4%	65.8%	68.3%
2015/16	68.1%	68.1%	70.8%
2016/17	70.3%	69.0%	71.8%
2017/18	69.0%	69.8%	72.4%
2018/19	68.3%	69.7%	72.6%





Air Pollution

Fine particulate matter (PM_{2.5}) is comprised of particles with a diameter smaller than 2.5µm. Sources can be industrial, commercial and agricultural in nature; however, road transport remains the biggest contributor to urban pollution.

PM_{2.5} can penetrate deep into the lungs and enter the blood stream. Exposure is associated with poor health outcomes from diseases, such as, asthma, COPD, lung cancer and coronary heart disease and impacts on low birth weight, diabetes and neurodegenerative diseases.

Whilst there are no established safe inhalation levels, the World Health Organisation (WHO) advocates a PM_{2.5} annual limit of 10µg/m³ as a starting point to encourage progressive reductions.

Whilst predicted annual average data from the British Lung Foundation (2018) suggest that Swan Network Wigan PCN practices are not located in areas which exceed WHO safe air pollution limits, it is acknowledged that actual PM_{2.5} levels may be greater in some areas when taking into consideration short-term exposure to high levels of fine particulate matter by the side of busy roads.

Swan Network Wigan PCN	PM _{2.5} (µg/m ³)
Bryn Cross Surgery	8.33
Hawkley Brook Medical Practice	7.81
Marus Bridge Practice	7.81
Medicentre	-
Saxena L	7.99
Shakespeare Surgery	7.81
The Chandler Surgery	7.81
Zaman	7.81

Data and Information Source: British Lung Foundation, 2018



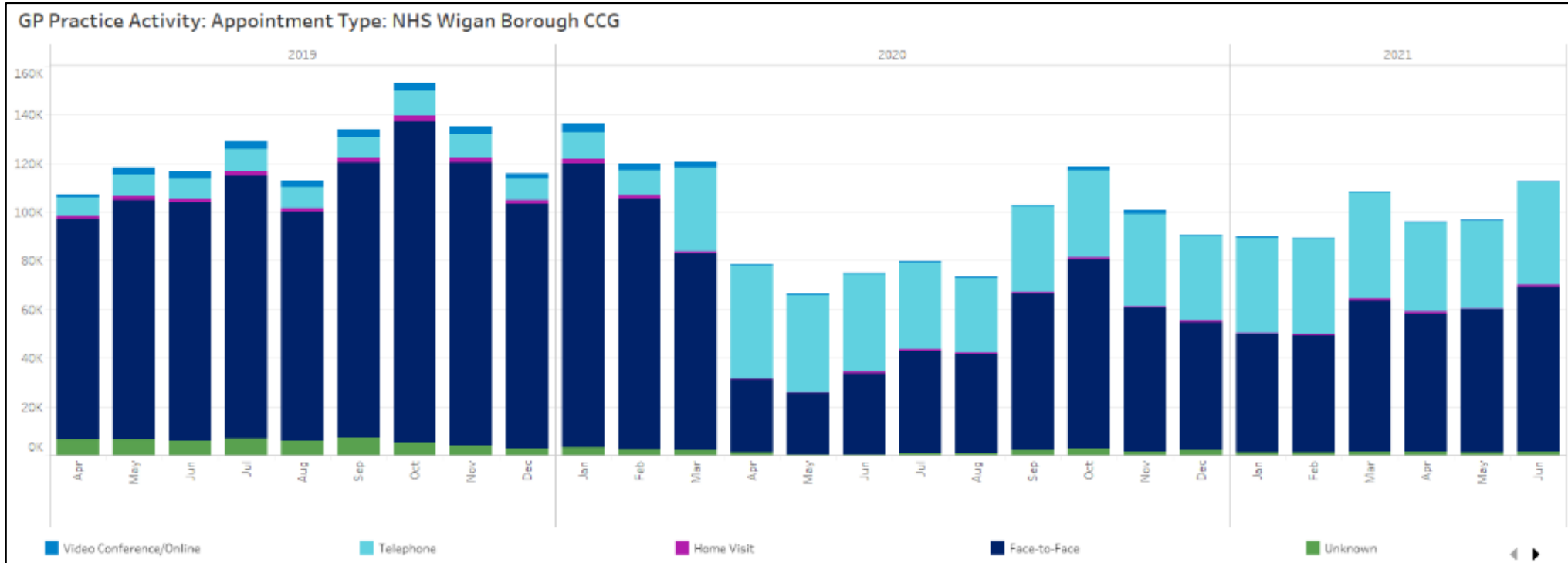
09

GP Practice Activity





GP Practice Activity: Appointment Type



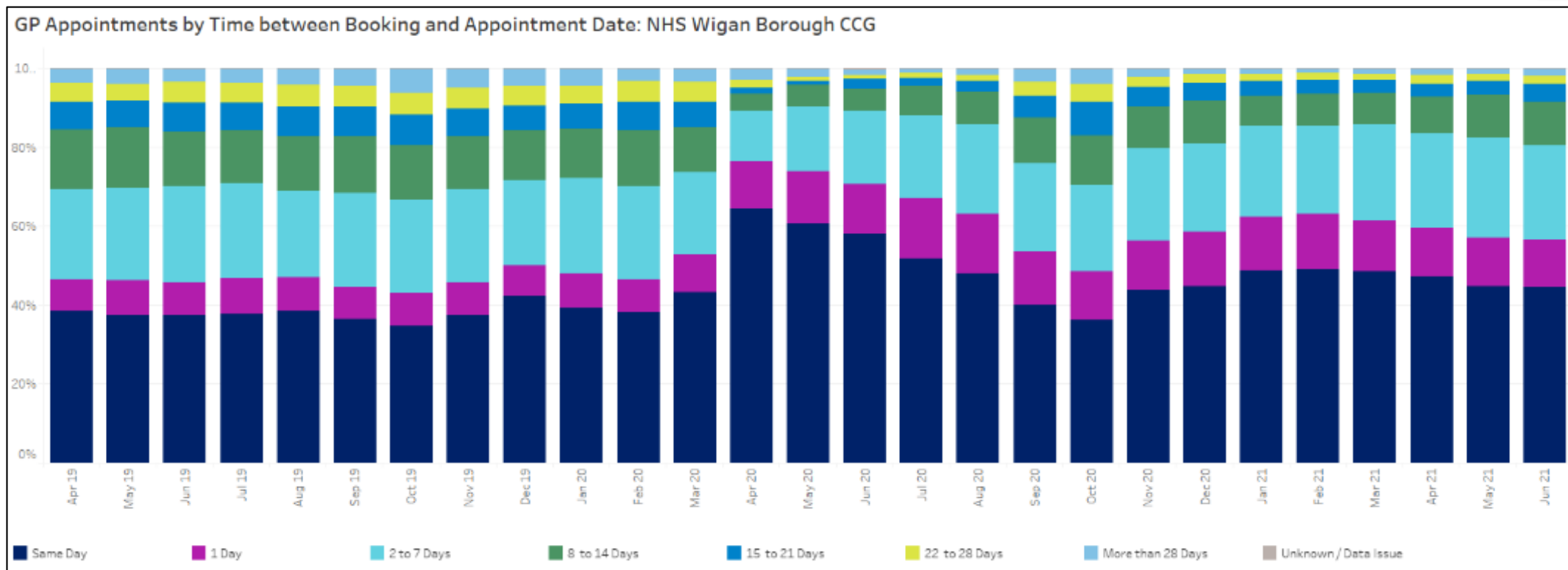
Type of GP Appointment	2019/20	2020/21
Face to Face	83.45% (n=1,251,048)	54.32% (n=583,021)
Telephone Consultation	9.05% (n=135,613)	42.79% (n=459,306)
Home Visit	1.34% (n=20,084)	0.66% (n=7,102)
Video Consultation/Online	2.22% (n=33,222)	0.63% (n=6,789)
Unknown	3.95% (n=59,177)	1.60% (n=17,155)

Total appointment numbers were 28% lower in 20/21 than in 19/20.

Reduced face to face appointments and increased telephone consultations are attributable to the Covid 19 pandemic

GP Practice Activity: Time of Appointment

Utilisation Management Unit



Appointment Time Frame	2019/20	2020/21
Same Day	38.29% (n=574,001)	48.38% (n=519,277)
1 Day	8.49% (n=127,315)	13.32% (n=143,012)
2-7 Days	23.19% (n=347,579)	21.25% (n=228,059)
8-14 Days	13.55% (n=203,197)	8.67% (n=93,102)
15-21 Days	7.08% (n=106,097)	3.98% (n=42,708)
22-28 Days	5.08% (n=76,094)	2.15% (n=23,108)
> 28 Days	4.21% (n=61,106)	2.13% (n=22,877)
Unknown	0.12% (n=1,755)	0.11% (n=1,230)

A higher proportion of appointments took place on the same day or the next day in 2020/21 than in 2019/20

Data Source: GMHSCP



10

Unplanned Hospital Activity





10.1 Total Activity

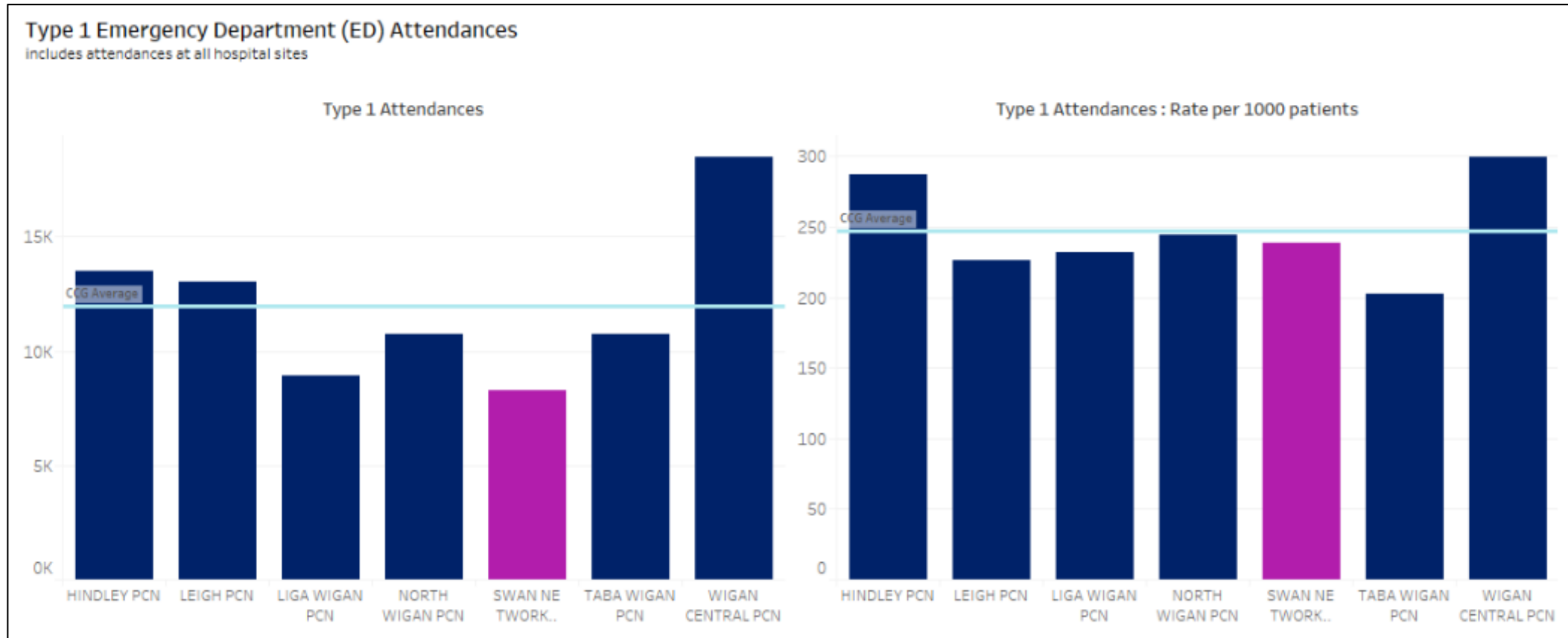


Type 1 Emergency Department (ED) Attendances



Data Source: GMHSCP

Data Period: 2020/21



The Swan Network Wigan PCN population generated 8,249 Type 1 ED attendances during financial year 2020/21.

This equates to an attendance rate of 238 per 1000 patients.



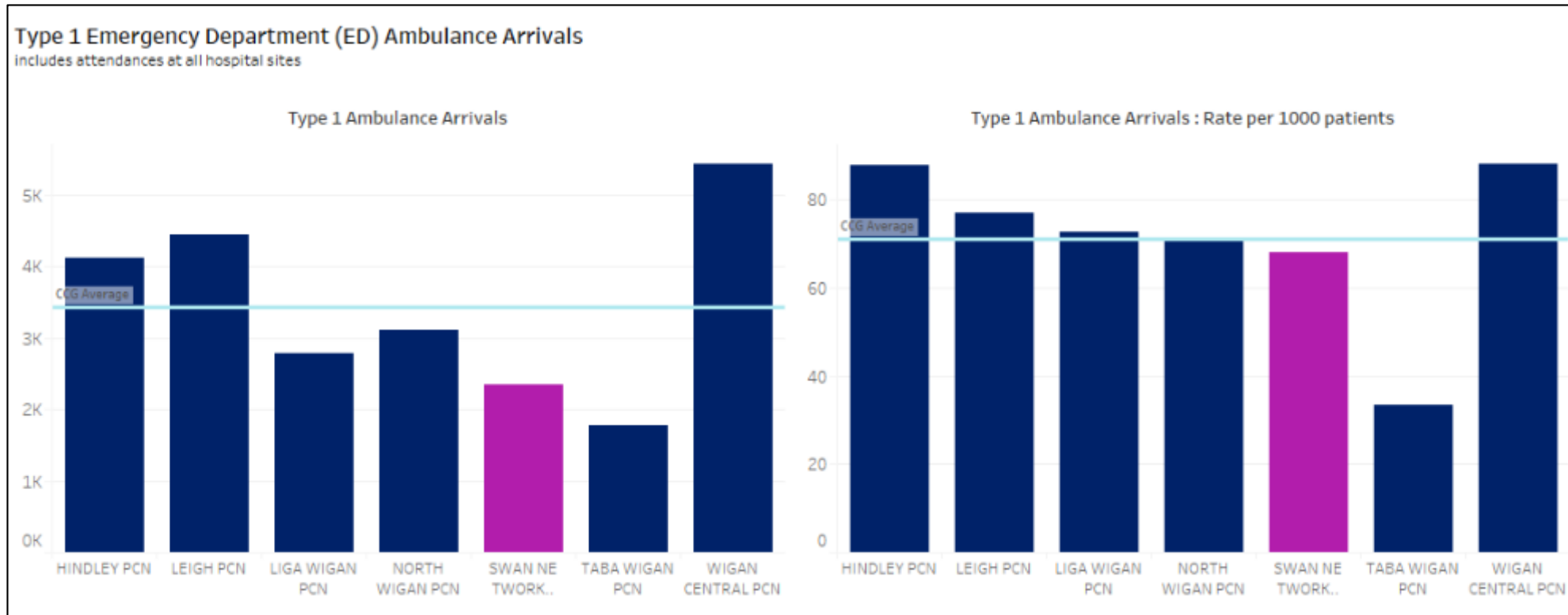
Type 1 Emergency Department (ED) Ambulance Arrivals



Utilisation Management Unit

Data Source: GMHSCP

Data Period: 2020/21



The Swan Network Wigan PCN population generated 2,357 ambulance arrivals during financial year 2020/21.

This equates to an ambulance arrival rate of 68 per 1000 patients.



Emergency Admissions

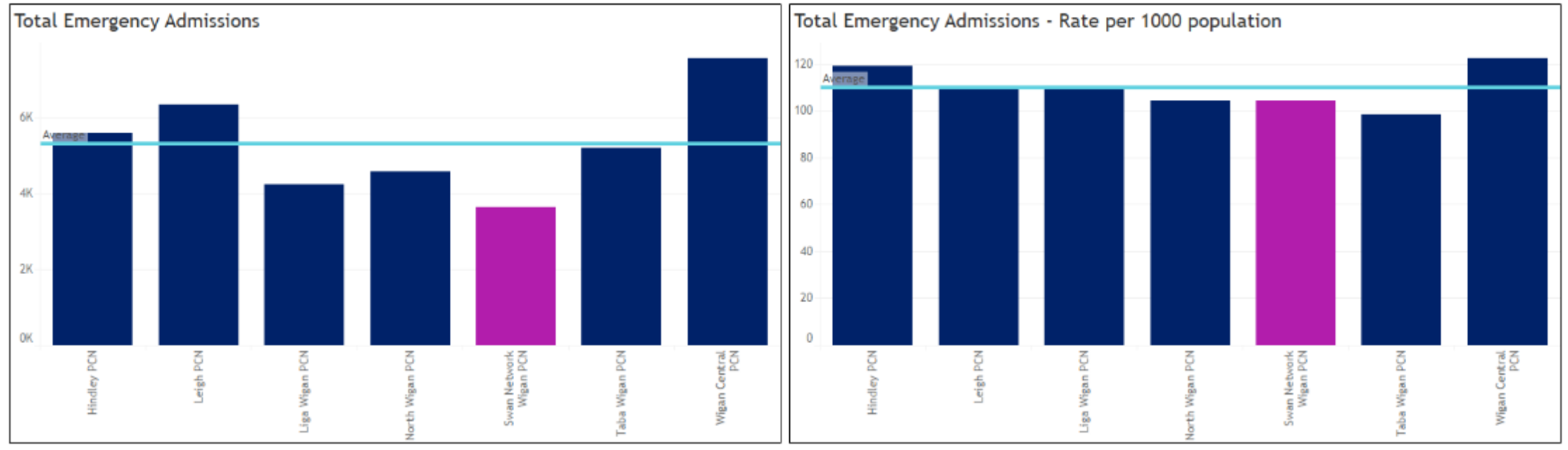
Data Source: GMHSCP

Data Period: 2020/21



Utilisation Management Unit

Total Emergency Admissions
includes admissions at all hospital sites

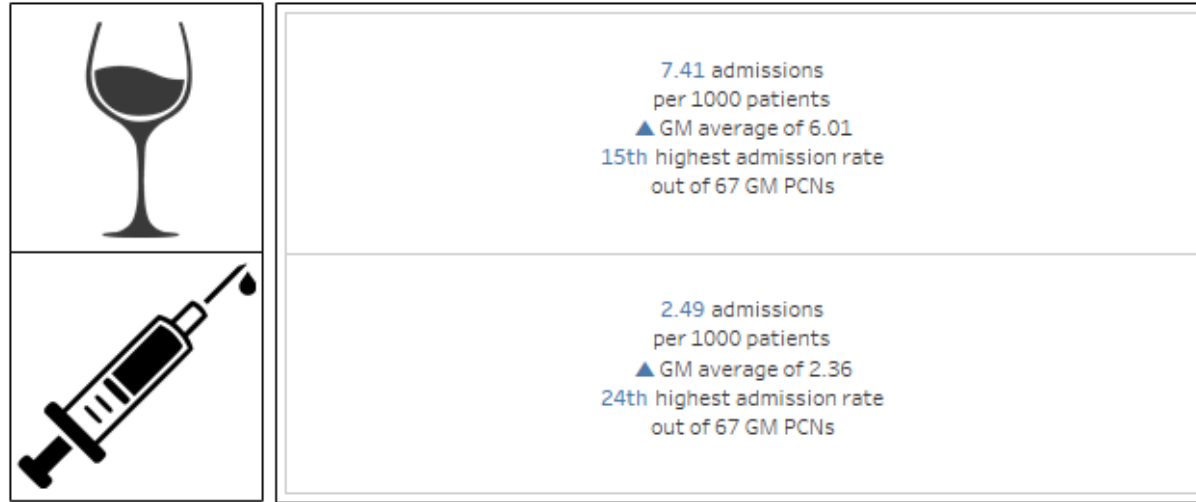


The Swan Network Wigan PCN population generated 3,632 emergency admissions during financial year 2020/21.

This equates to an emergency admission rate of 104 per 1000 patients.



Alcohol and Drug Related Admissions



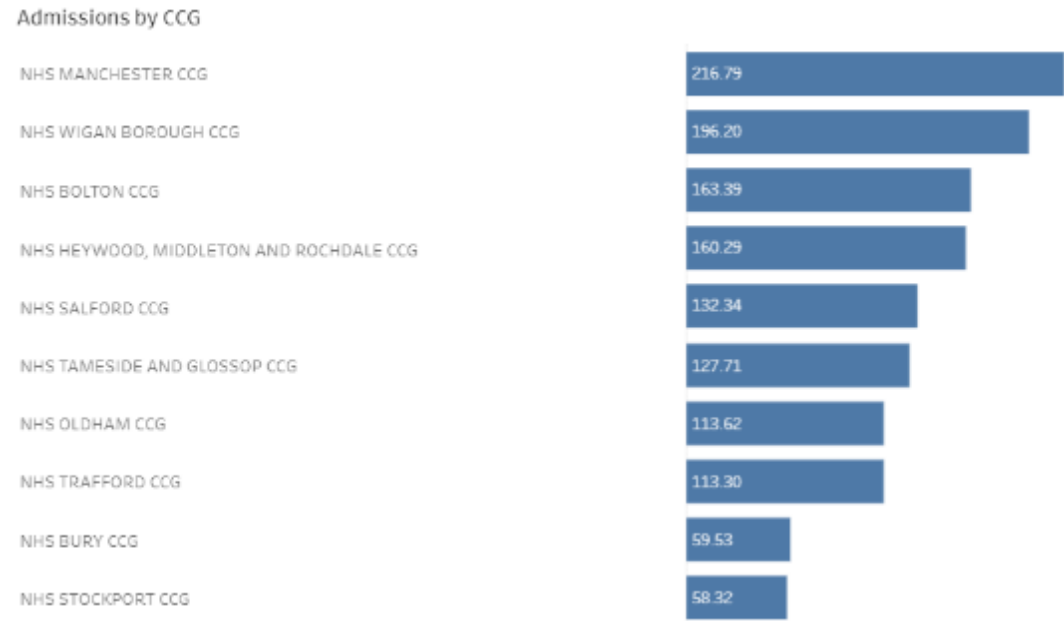
Data Source: GMHSCP PCN Dashboard
 Data Period: April 2020 - March 2021
 Note: Data include emergency admissions to all hospital sites

PCN	Alcohol Related Hospital Admissions (per 1000 population)	Drug Related Hospital Admissions (per 1000 population)
Hindley PCN	9.60	5.53
Leigh PCN	8.98	5.96
Liga Wigan PCN	8.62	4.27
North Wigan PCN	7.38	2.91
Swan Network Wigan PCN	7.41	2.49
Taba Wigan PCN	6.33	2.80
Wigan Central PCN	10.62	7.29

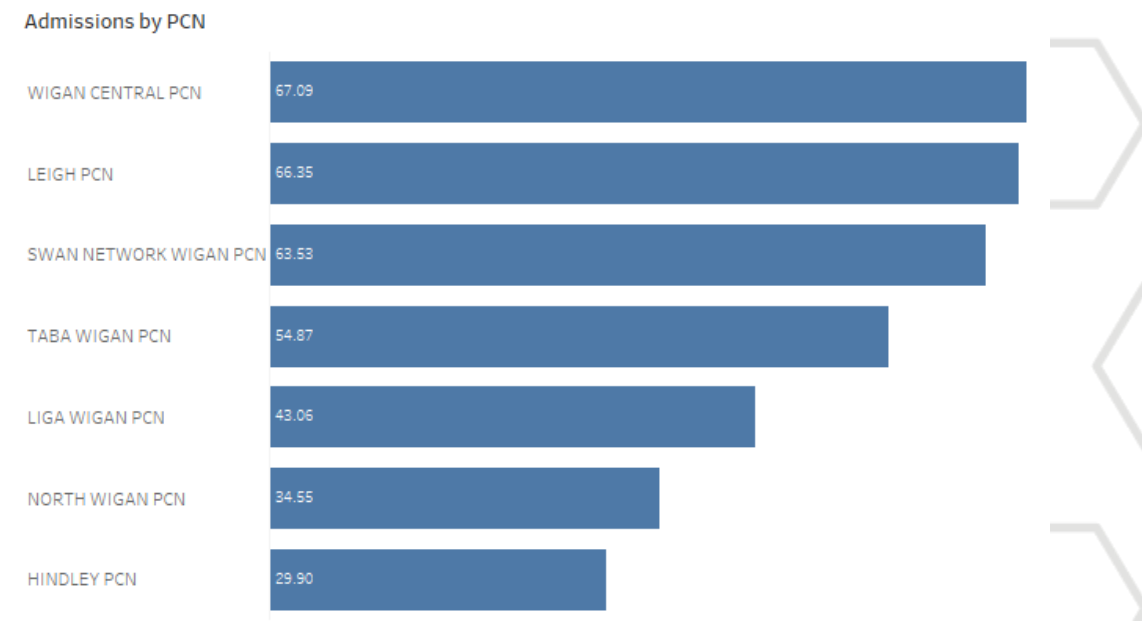


Wigan Borough CCG Hospital Admissions with Covid-19 Diagnosis Code

Admission Rate per 1000 population by CCG



Admission Rate per 1000 population by Wigan PCNs



There were 2,555 Wigan Borough CCG hospital admissions with a Covid-19 diagnosis code, who were subsequently 'discharged' during the period, January 2020 to June 2021.

50% (n=1,747) died in hospital.

There were 354 Swan Network Wigan PCN hospital admissions with a Covid-19 diagnosis code, who were subsequently 'discharged' during the period, January 2020 to June 2021.

64% (n=225) died in hospital.

Data Source: GMHSCP, 01/01/2020 - 30/06/2021
 Note: Data include only those with a Covid-19 diagnosis code (U07.1 or U07.2) on **DISCHARGE**
 Note: Data include emergency admissions to all hospital sites

Whilst these data only provide a snapshot they demonstrate some of the health impact of the COVID-19 pandemic, specifically in terms of PCN level hospitalisations.



10.2 Children's Activity



Emergency Department and Emergency Admission Activity

Data Source: Fingertips, Public Health England



ED attendance rate per 1000 resident population
Aged 0-17 years

	Wigan	NW	England
2011/12	391	430	365
2012/13	562	453	371
2013/14	547	436	370
2014/15	552	438	383
2015/16	575	474	405
2016/17	550	496	412
2017/18	533	491	410
2018/19	557	489	422



Emergency admission rate per 1000 resident population
Under 18 years

	Wigan	NW	England
2011/12	66.6	*	70.8
2012/13	64.4	97.3	73.1
2013/14	64.2	93.7	72.2
2014/15	65.5	96.8	73.3
2015/16	63.9	99.5	75.5
2016/17	56.8	100.8	75.8
2017/18	61.1	102.3	75.3
2018/19	66.8	107.5	77.9
2019/20	61.9	102.2	75.2

* Not published, reason not provided



Emergency Admissions: Asthma

Emergency admissions due to asthma

Rate per 100,000 resident population, aged 0-9 years

	Wigan	NW	England
2011/12	251	436	271
2012/13	335	483	308
2013/14	233	406	260
2014/15	296	457	280
2015/16	308	426	260
2016/17	258	377	256
2017/18	207	345	230
2018/19	182	322	220
2019/20	144	271	192

Emergency admissions due to asthma

Rate per 100,000 resident population, aged 10-18 years

	Wigan	NW	England
2011/12	111.3	153.7	108.3
2012/13	116.5	168.7	122.0
2013/14	121.4	167.1	122.0
2014/15	137.1	194.3	138.7
2015/16	123.0	186.0	132.0
2016/17	61.0	176.1	137.6
2017/18	75.4	198.6	133.7
2018/19	104.4	178.8	127.9
2019/20	87.5	170.3	123.4



Mental Health Related Emergency Admissions

Emergency admissions for mental health disorders per 100,000 resident population, aged under 18 years

	Wigan	NW	England
2017/18	117.5	105.6	84.7
2018/19	131.6	104.3	88.3
2019/20	108.8	111.3	89.5

Emergency admissions due to self harm per 100,000 resident population, aged 10-14 years

	Wigan	NW	England
2017/18	443.9	313.5	210.4
2018/19	467.6	329.9	226.3
2019/20	403.4	326.8	219.8

Emergency admissions due to self harm per 100,000 resident population, aged 15-19 years

	Wigan	NW	England
2017/18	837.3	706.7	648.6
2018/19	1004.0	730.4	659.5
2019/20	1168.2	744.3	664.7

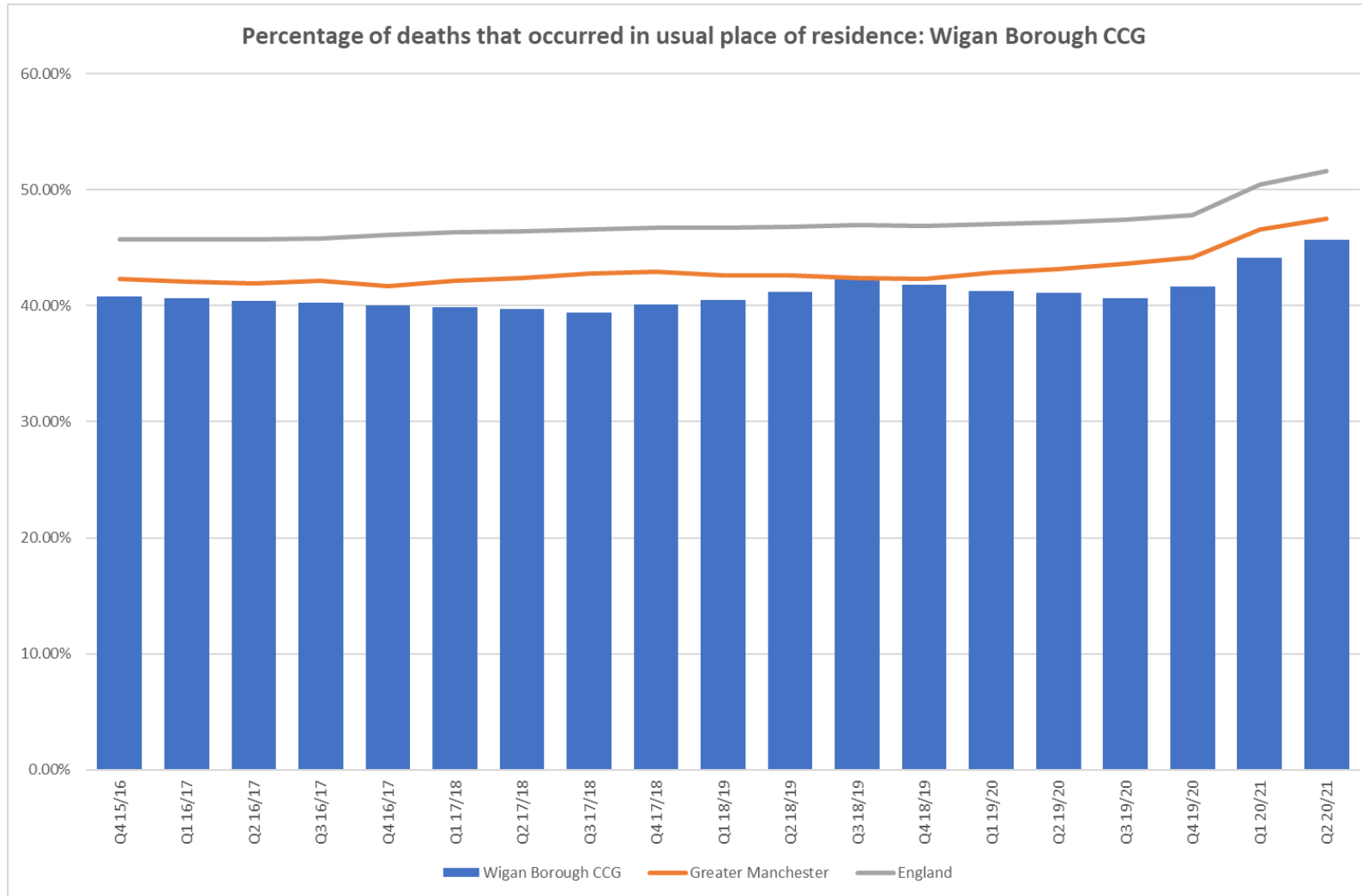


10.3 End of Life



Deaths in Usual Place of Residence

Data Source: ONS



Figures are for the 12 month rolling period to the end of the listed quarter



11



Summary



Summary

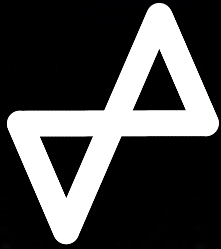
Utilising the data that are currently available it is not possible to comprehensively establish the nature, level and drivers of health inequalities across the seven Wigan PCNs.

Health outcome data do not appear to be available on a PCN footprint.

Whilst rich information is likely available at individual GP practice level, PCN aggregated and linked datasets are not accessible (for secondary use) to provide actionable insight into which communities and individuals to target, engage and work with where;

- Comparatively high disease prevalence exists.
- There are opportunities for life style interventions.
- There is overutilisation of unplanned services, such as, NHS 111 and ED, and underutilisation of preventative services, such as, annual health reviews and checks, immunisation and cancer screening.

Or to scrutinise practice level activity in order to identify, understand and reduce any unwarranted variation.



Health
Innovation
Manchester



Utilisation Management Unit

Thank you

Clinical Contact: Caroline Dykeman RN (Adult)
Clinical Development Lead
Email: caroline.dykeman@nhs.net

Analytical Contact: Sarah Fretwell
Analytical Manager
Email: sarah.fretwell@nhs.net



DISCOVER



IMPROVE



EVALUATE



CHANGE